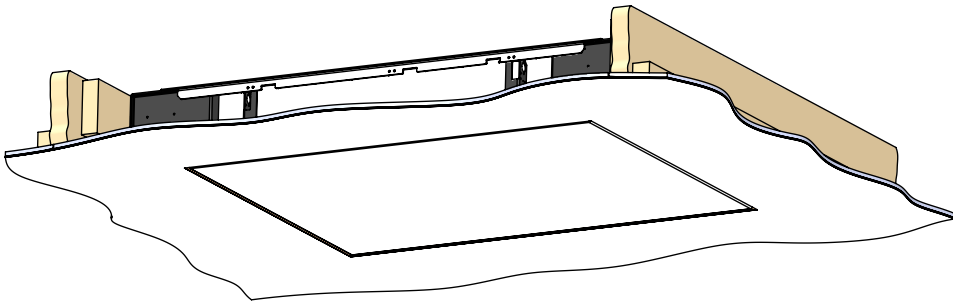
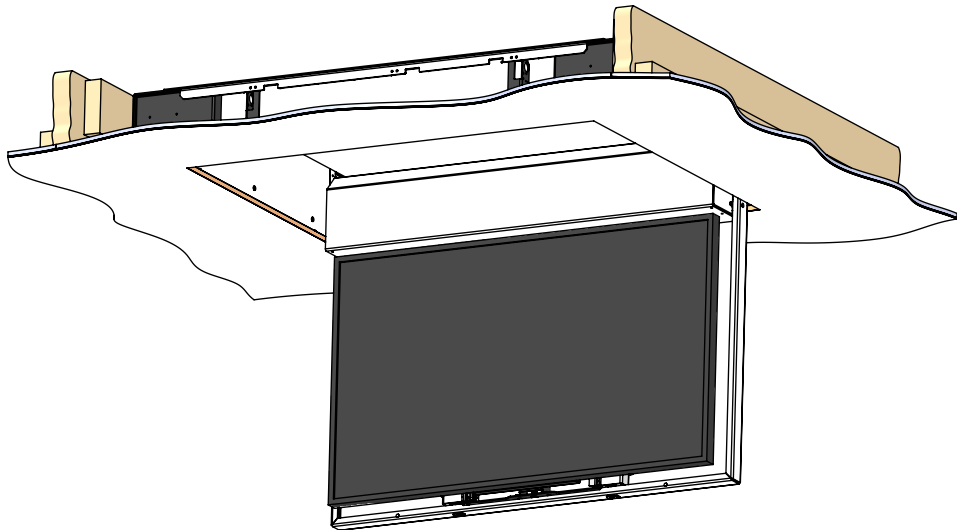


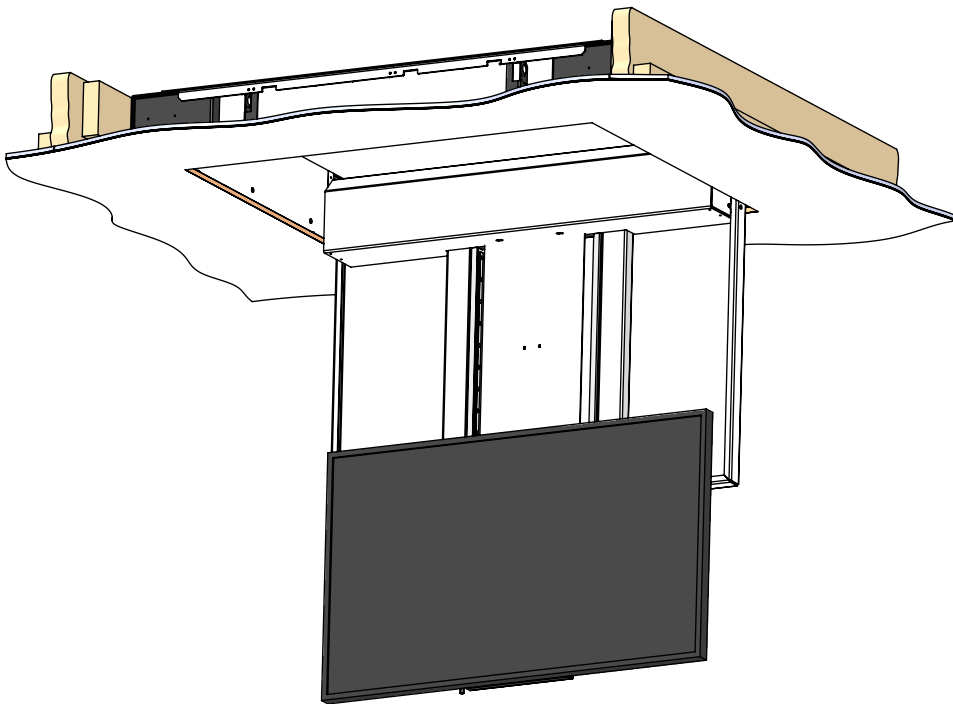
IN



OUT



OUT AND TELESCOPED



A motorised mechanism to reveal display from the ceiling. This version hinges down by 90 degrees and then telescopes the television further down from the ceiling.

The size reference for this version is **CHRT4-RES**.

The mechanism is fixed in place before the ceiling is finished. Supplied with MDF plaster edging to neatly plaster into ceiling.

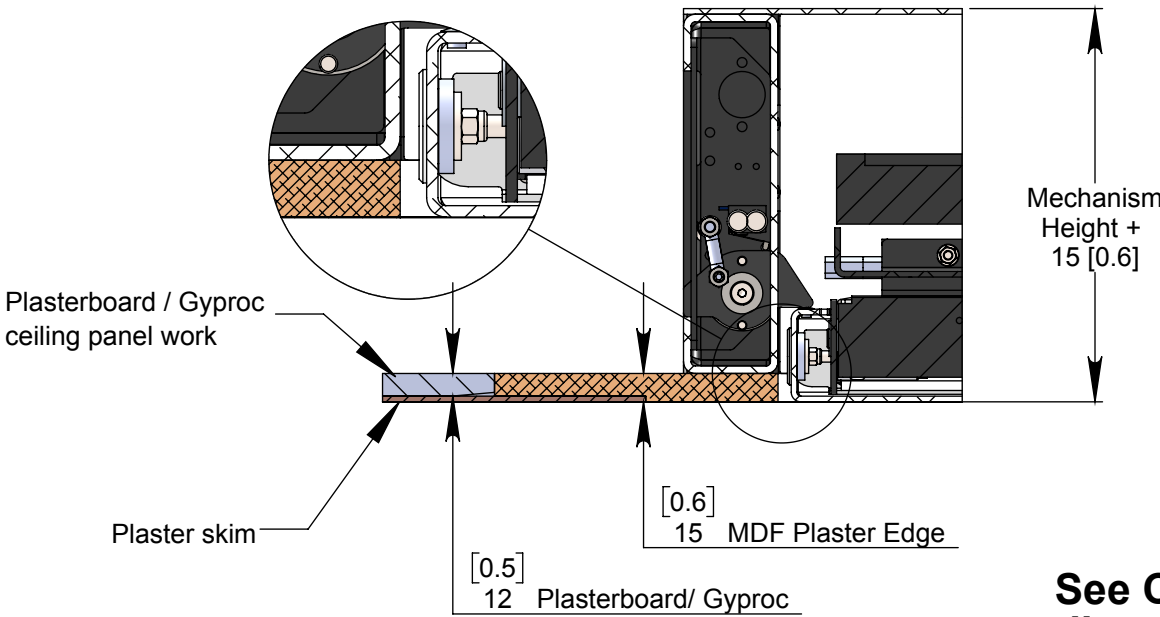
The control system can be operated via infra-red, RS232 or contact closure inputs.

Speakers can be added with the use of standard speaker mount brackets. (If required please specify during ordering process.)

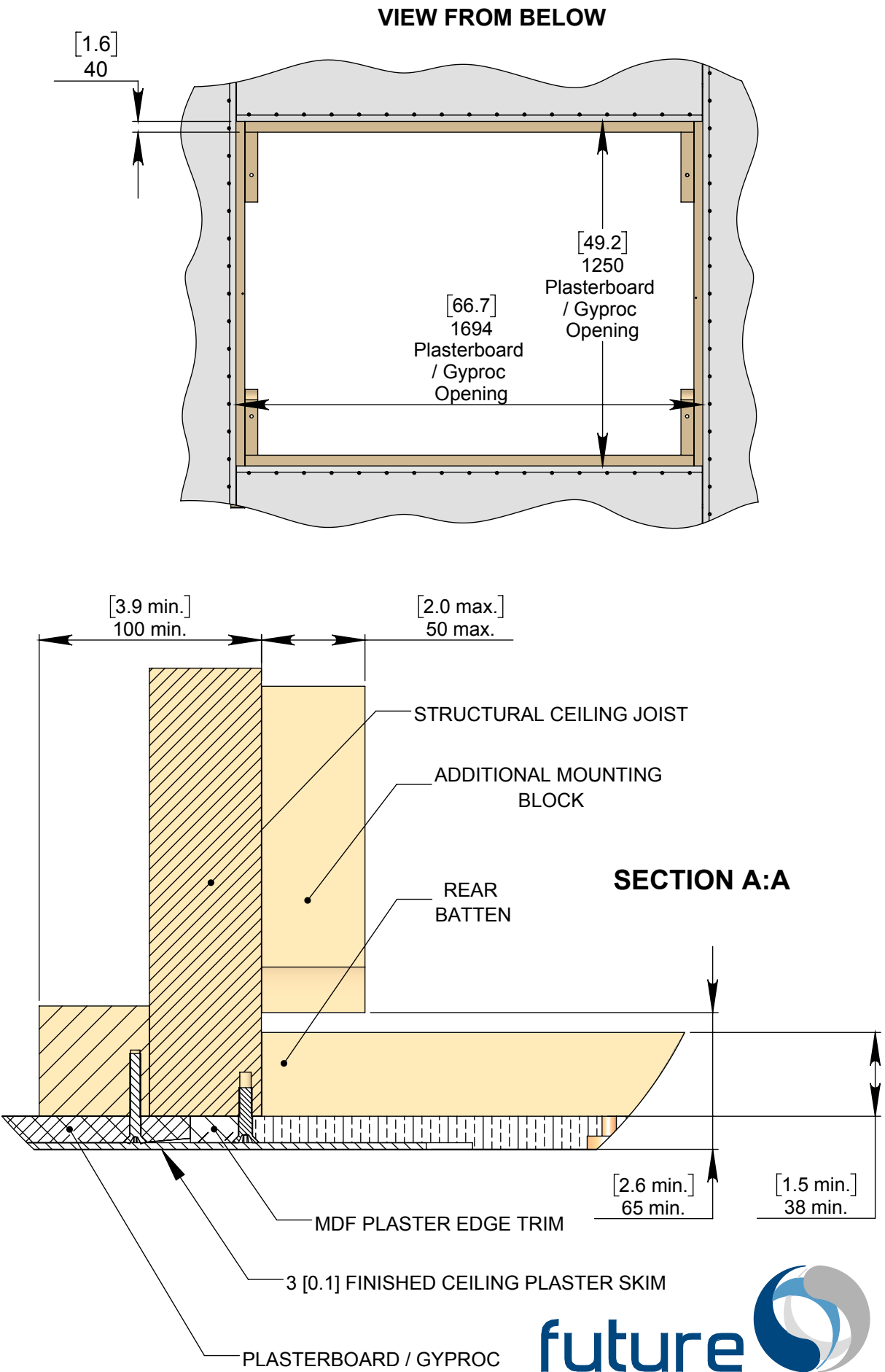
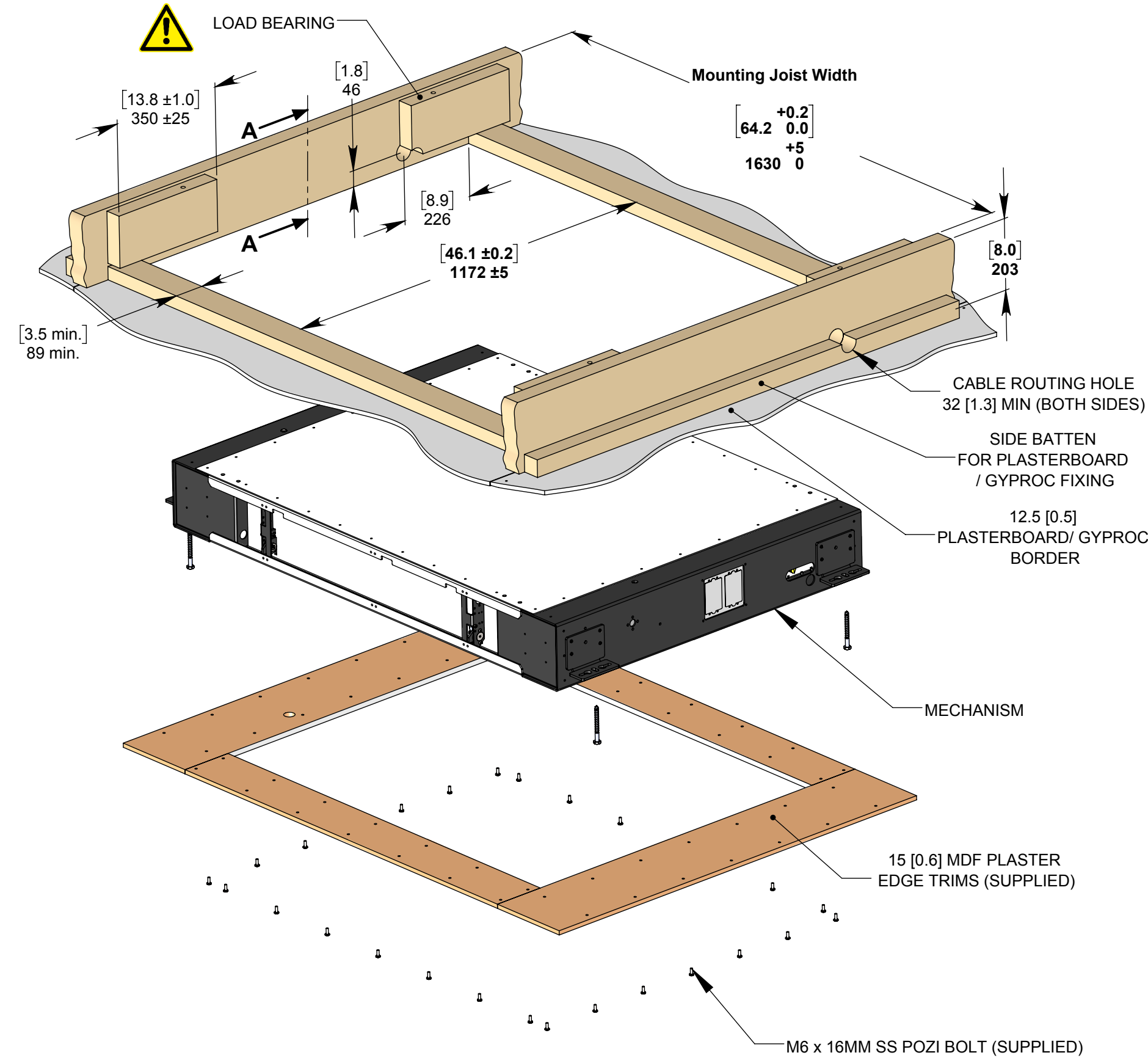
See overview technical sheet for details on other products in the range.

Model Code	CHRT4-RES
Max Screen Size	1130 [44.5] x 680 [26.8] x 100 [3.9]
Max Screen Weight	30kg [66lbs]
Approx Mechanism Weight	115kg [253lbs]
Environment	Residential
Colour	WHITE - RAL9910 Satin Finish
Control System	Accessible by Internal access hatch
Ceiling Void Require For Fitting	1630 [64.2] W x 1172 [46.1] L x 203 [8.0] D

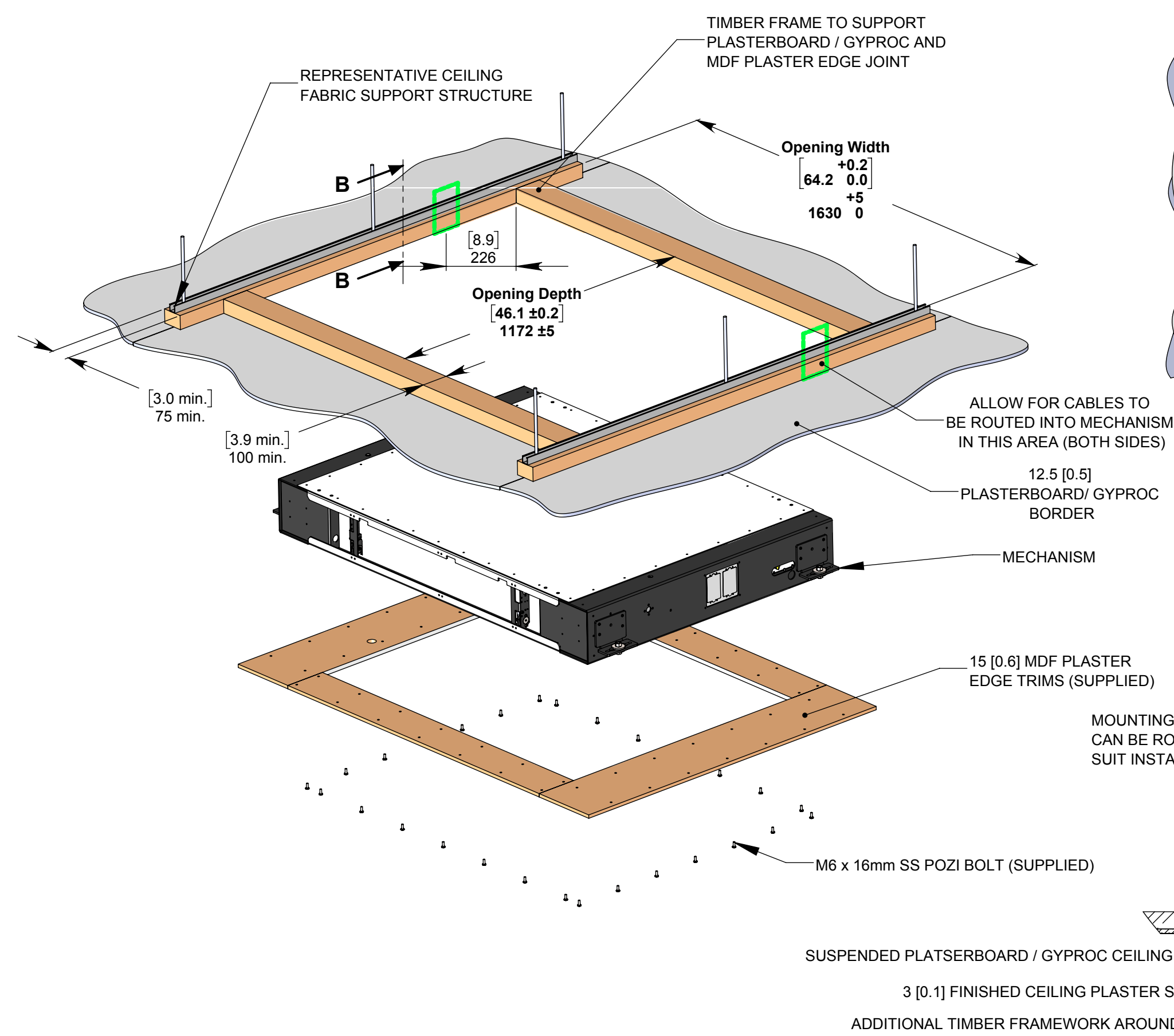
RESIDENTIAL MDF PLASTER EDGE



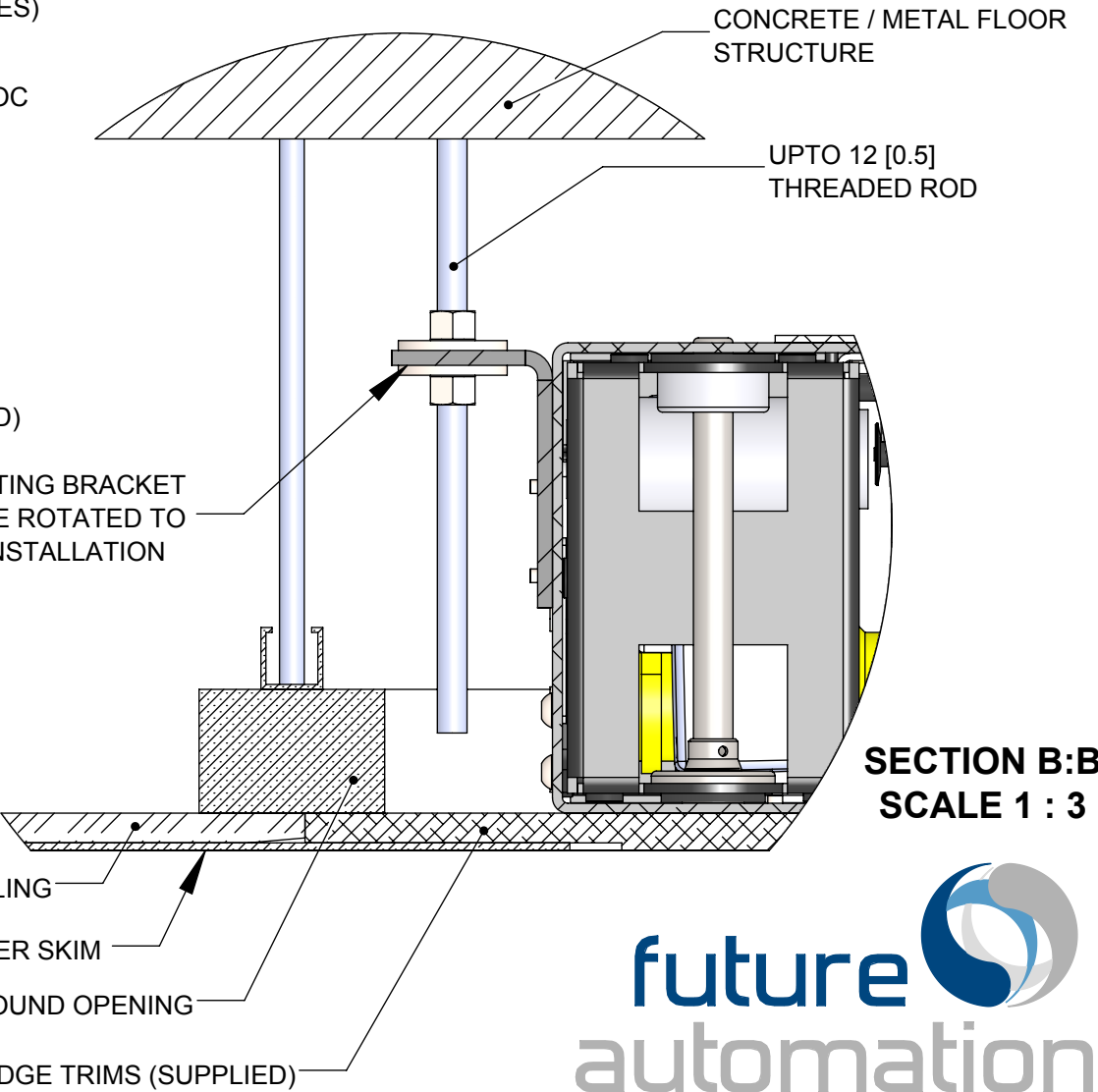
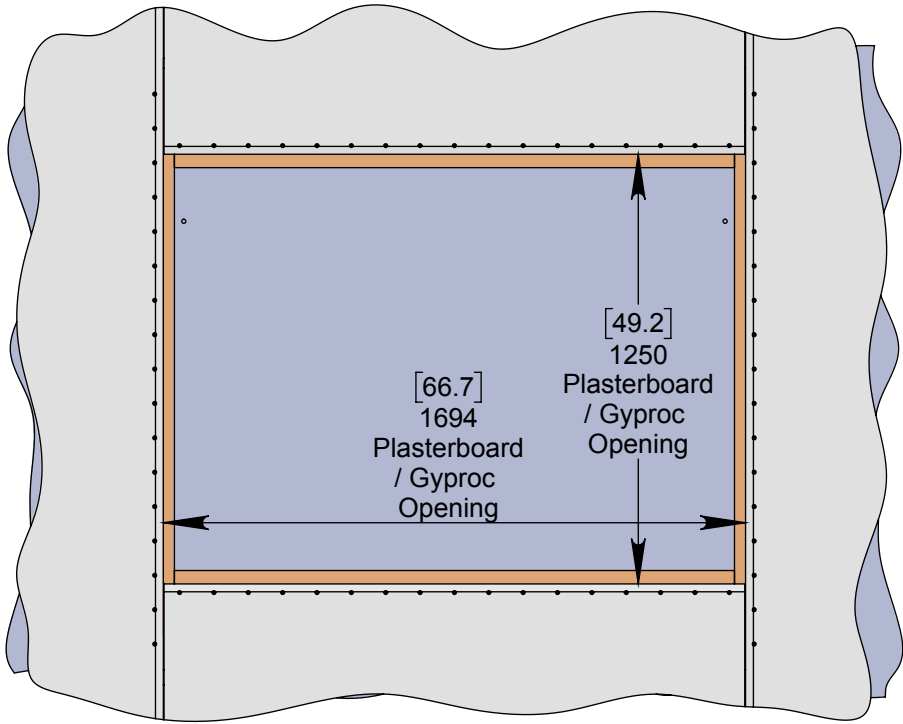
OPTION 1 - FIXING TO WOODEN BEAMS



OPTION 2 - SUSPENDING FROM CEILING STRUCTURE ABOVE



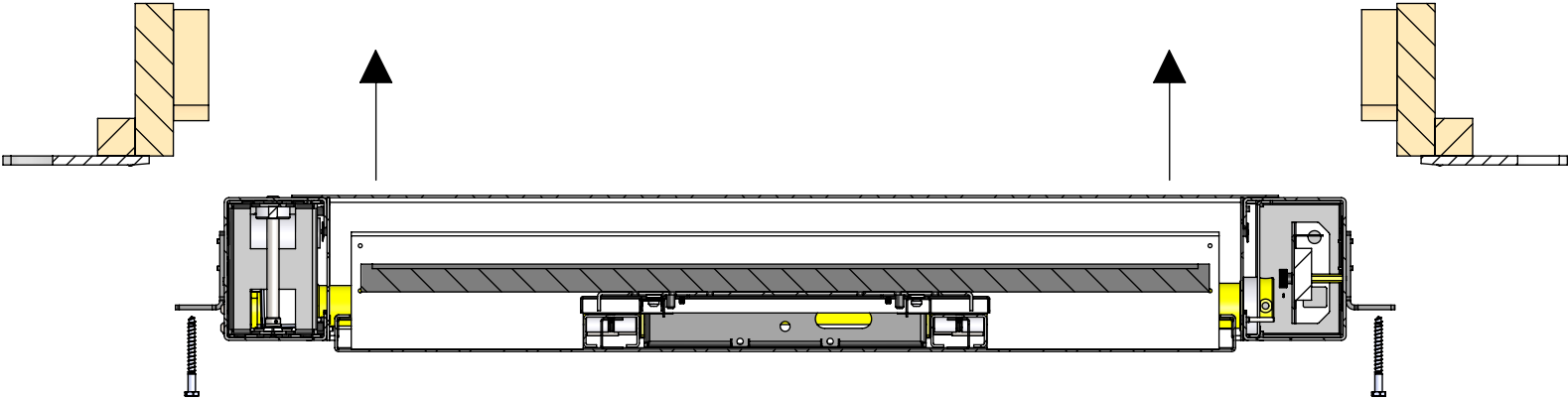
VIEW FROM BELOW



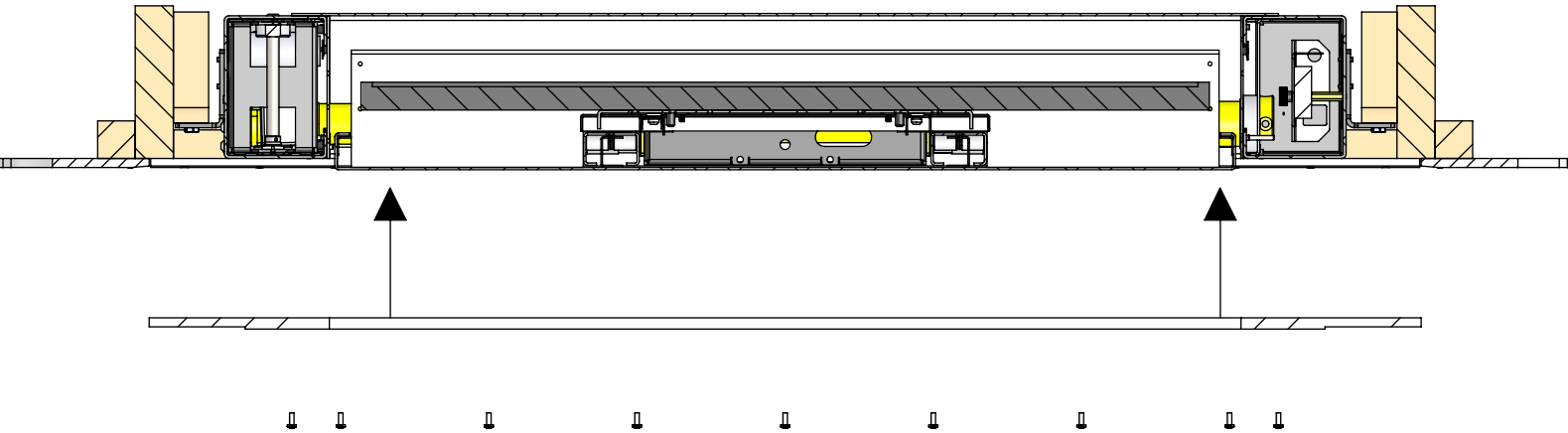
INSTALLATION PROCEDURE

1 Mechanism Installation

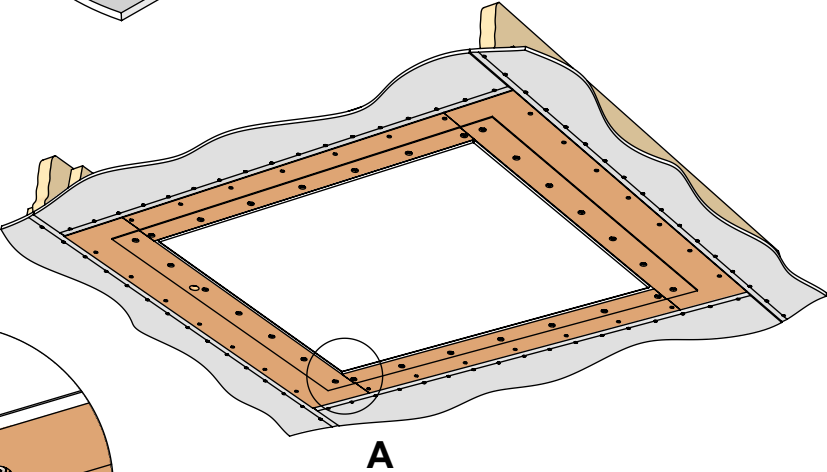
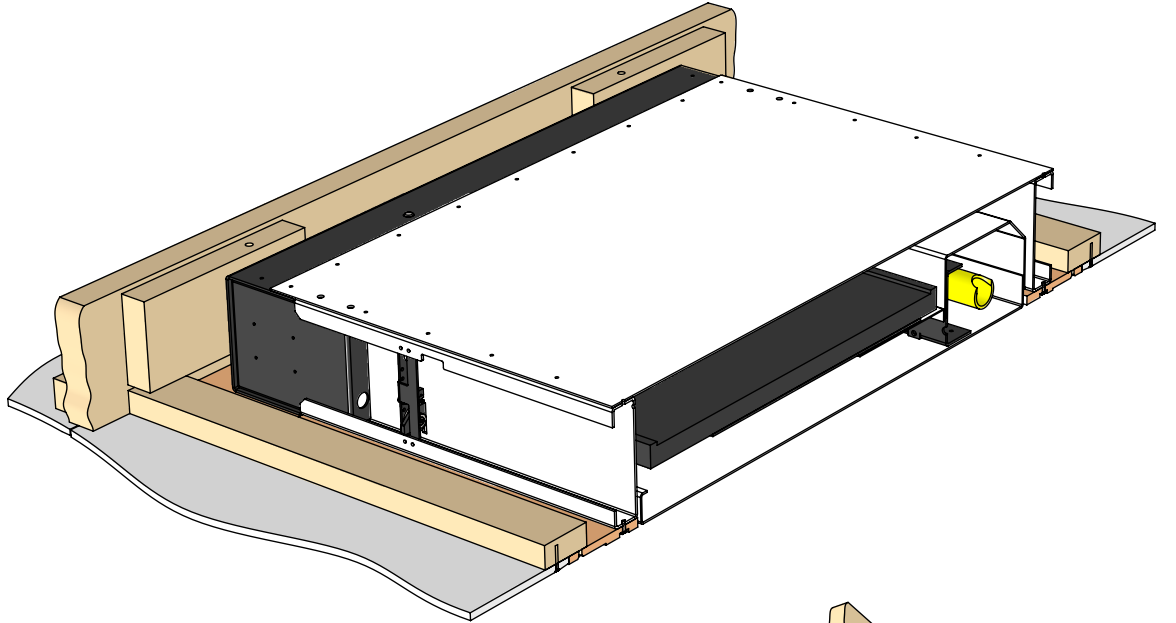
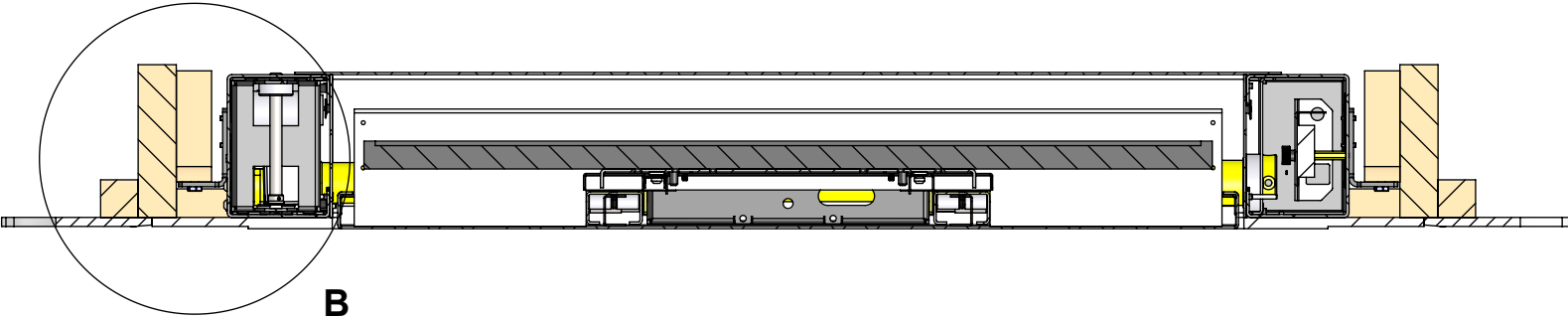
THE INSTALLATION PROCEDURE IS CARRIED OUT IN THE SAME WAY FOR OPTION 1 OR OPTION 2



2 MDF Plaster Trim Installation



3 Plastering



DETAIL A
SCALE 1 : 5

28 No. OFF
SS M6 x 16MM
POZI (SUPPLIED)

28 No.OFF
MDF SCREW
(NOT SUPPLIED)

SUITABLE FIXING
(NOT SUPPLIED)

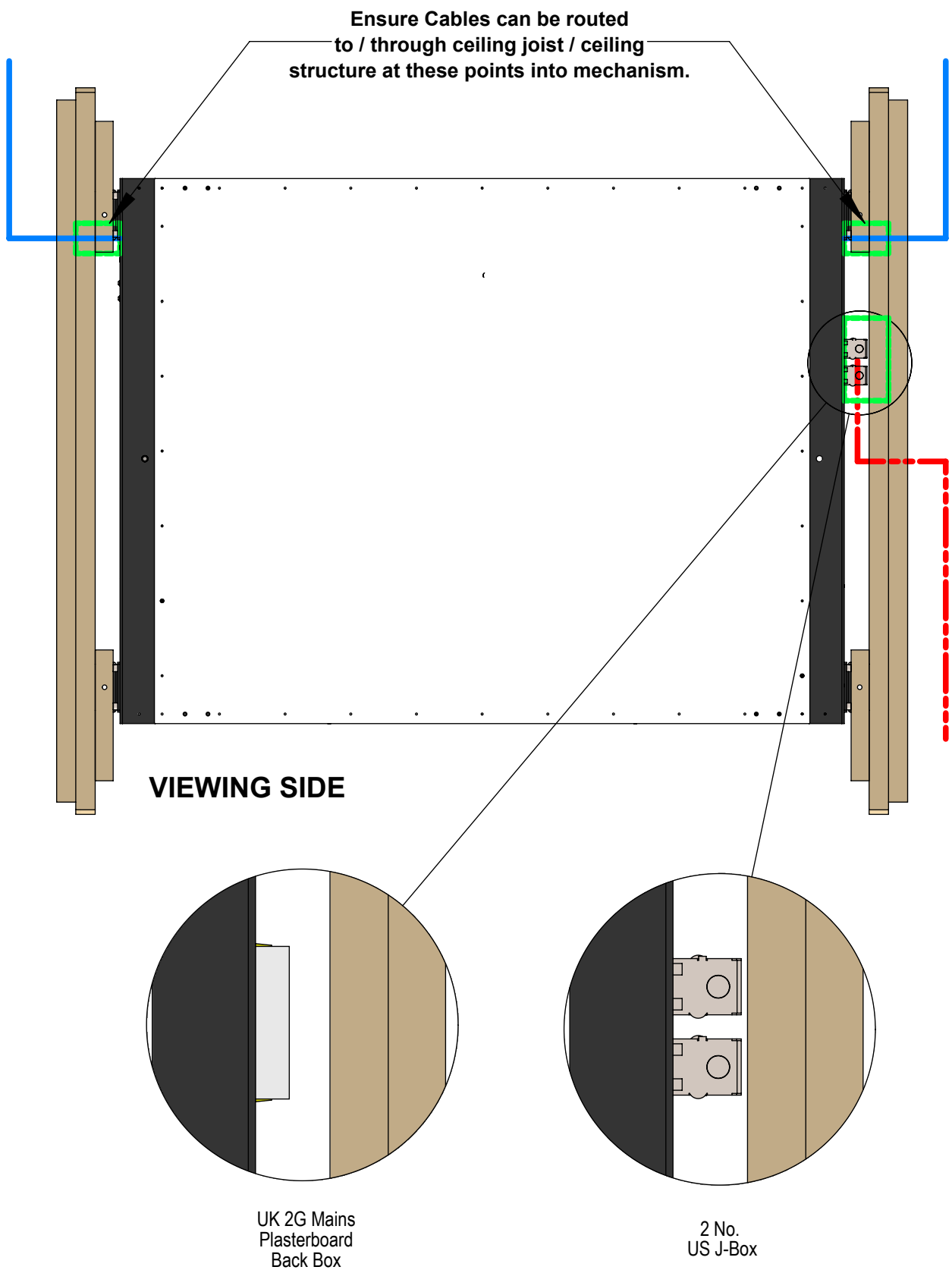
DETAIL B
SCALE 1 : 5

3 [0.1] FINISHED
CEILING PLASTER
SKIM

FINISHED CEILING

[8.6]
218

CEILING PREPERATION



Cable Routing

Cables for the screen can be routed in from both sides, allowing for power and signal cables to be separated when entering the mechanism.

The opening on both sides is **MIN. 32mm [1.3"]** in diameter allowing for multiple cables to be routed to the screen.

A power outlet mounting plate is supplied in the right hand gearbox allowing for UK and US power outlets to be wired directly into the mechanism.

