

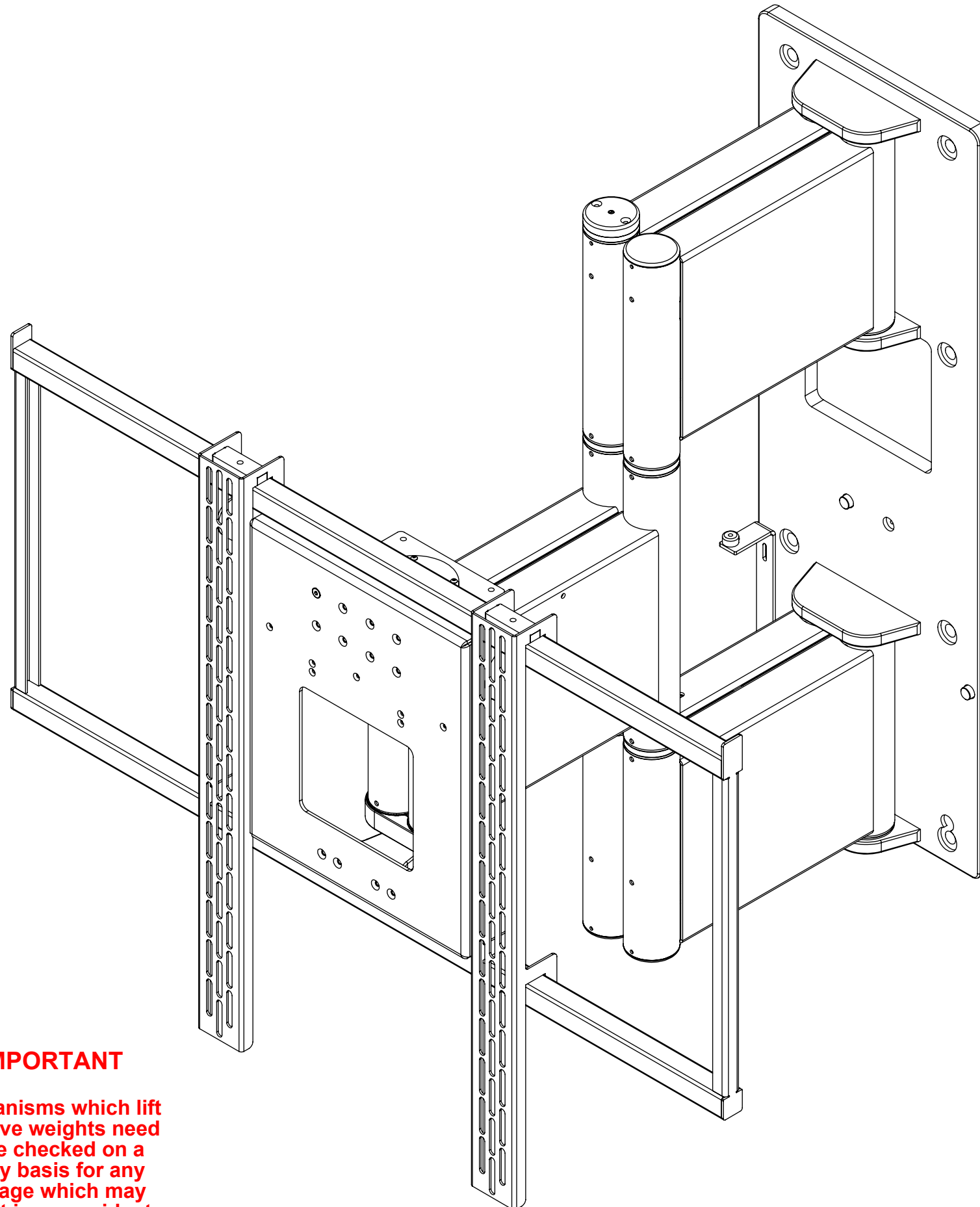


DESIGN HIGHLIGHTS

- Quiet smooth action
- Full cable management
- Stylish look and finish
- Wide range of mounting options

OPTIONS

- Marine suitable option
- Any RAL colour available
- Bang & Olufsen / Loewe mount option



WARNING

It is the responsibility of the installer to warn all potential and end users of the dangers of interfering with mechanisms during operation

IMPORTANT

Mechanisms which lift or move weights need to be checked on a yearly basis for any damage which may result in an accident

FUNCTION

The HQA mechanism moves a screen away from a wall to both the right and left, to an angle of up to 75 degrees. The maximum swivel angle is reduced with larger screens.

The mechanism can also move parallel to the wall, making it ideal for use in a recess.

Cables for the screen can be routed through the bracket for a very neat look.

SUITABILITY

The HQA is ideal for 85" to 110" screens up to 150 KG

A marine version is also available

SPECIFYING

Check wall makeup to decide on fixings to be used.

Check screen details for mounting possibilities.

Check angles for viewing.

CONTROL

Supplied with basic infrared remote. Can be learnt by many learning remotes.

Also has switch control and RS232 so can be operated by relays, switches, Crestron / AMX or Lutron systems.

Design Highlights

Sophisticated electronics allow for a favourite viewing position to be programmed via the IR remote control.

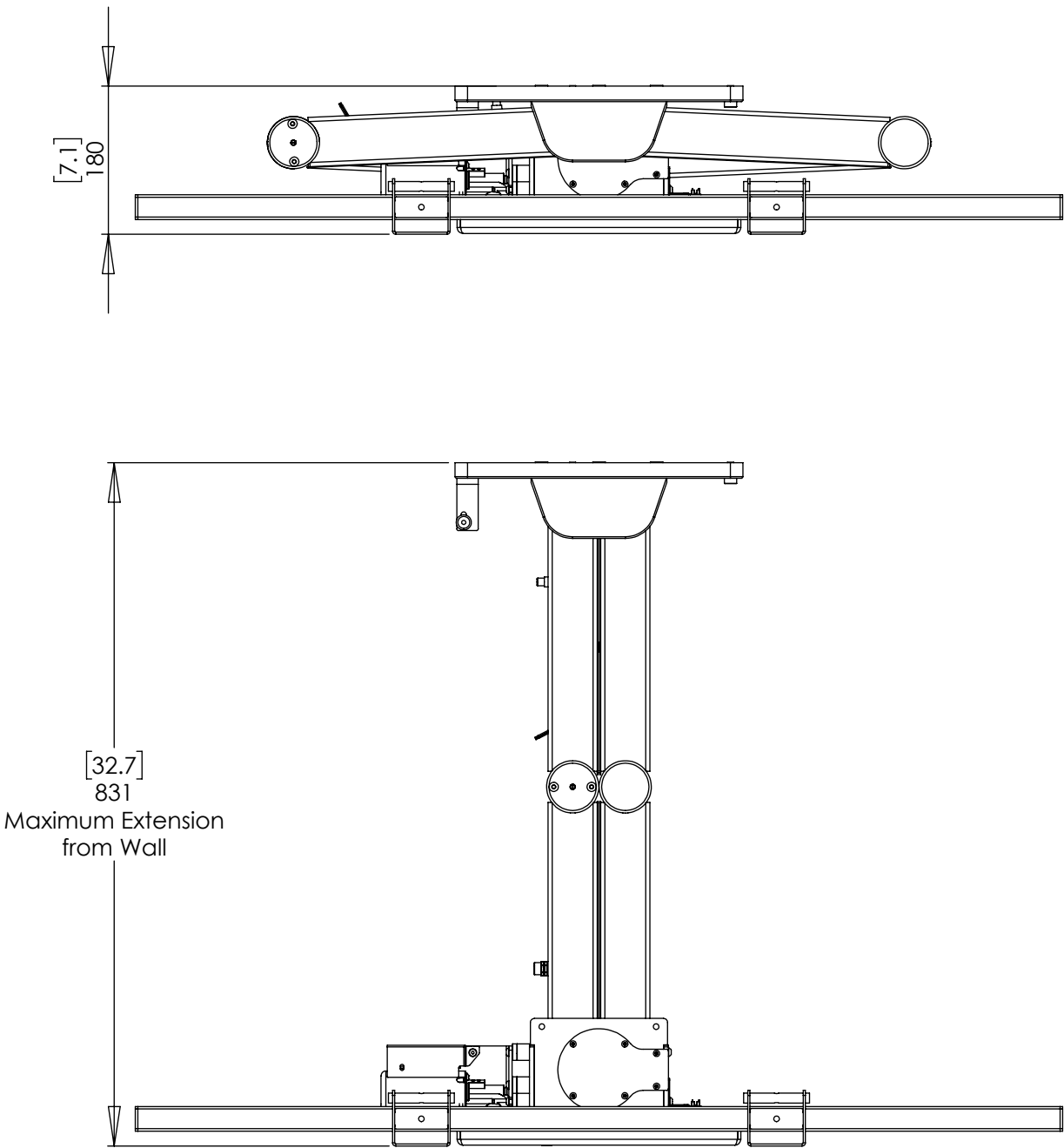
The mechanism allows up to 831mm [32.7] extension of screen centre from wall.

The bracket can move parallel to the wall to initially take the screen out of a tight recess. The screen will then turn to the appropriate side up to a maximum of 75°, please note that larger screens reduce the maximum achievable swivel angle.

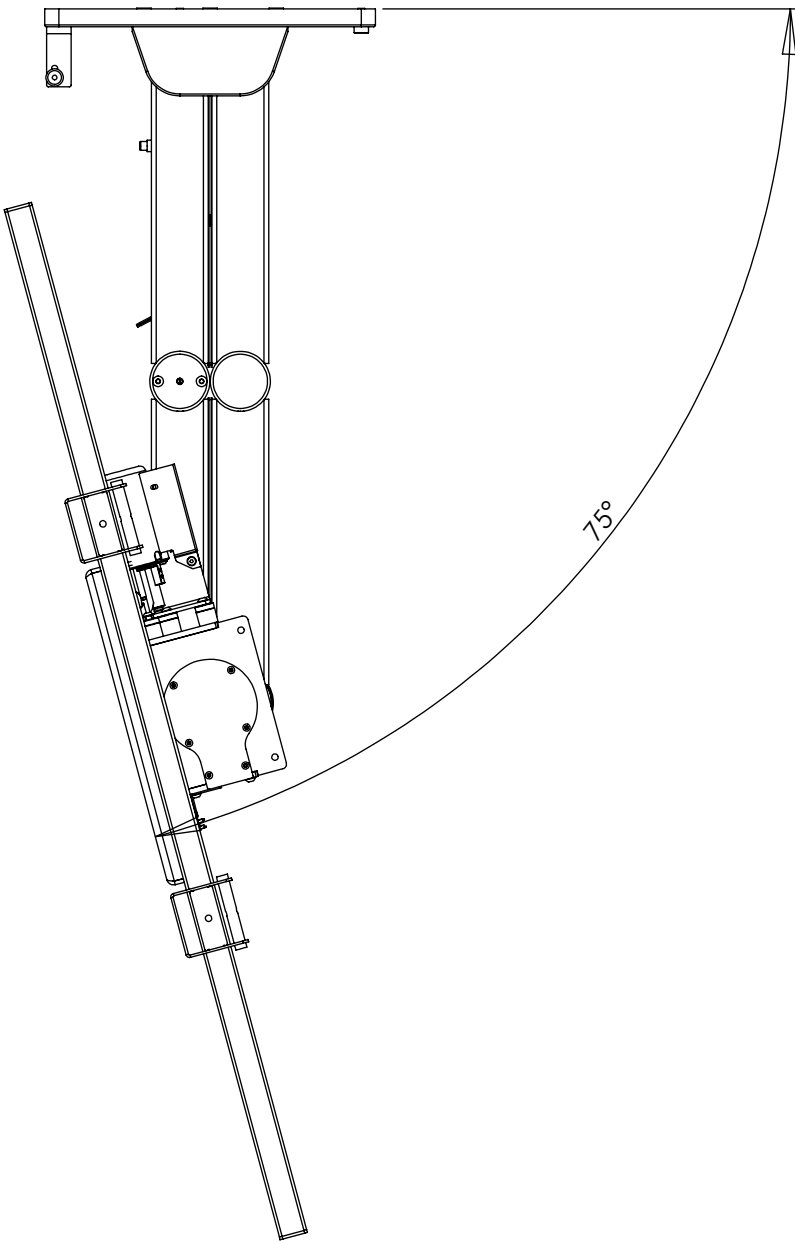
Hook on removable uprights allow the bracket to take a wide variety of screens.

The arms on the right-hand side of the bracket are reserved to conceal all power and signal cables.

Available with Marine Lock to safely lock bracket against wall when not in viewing position.

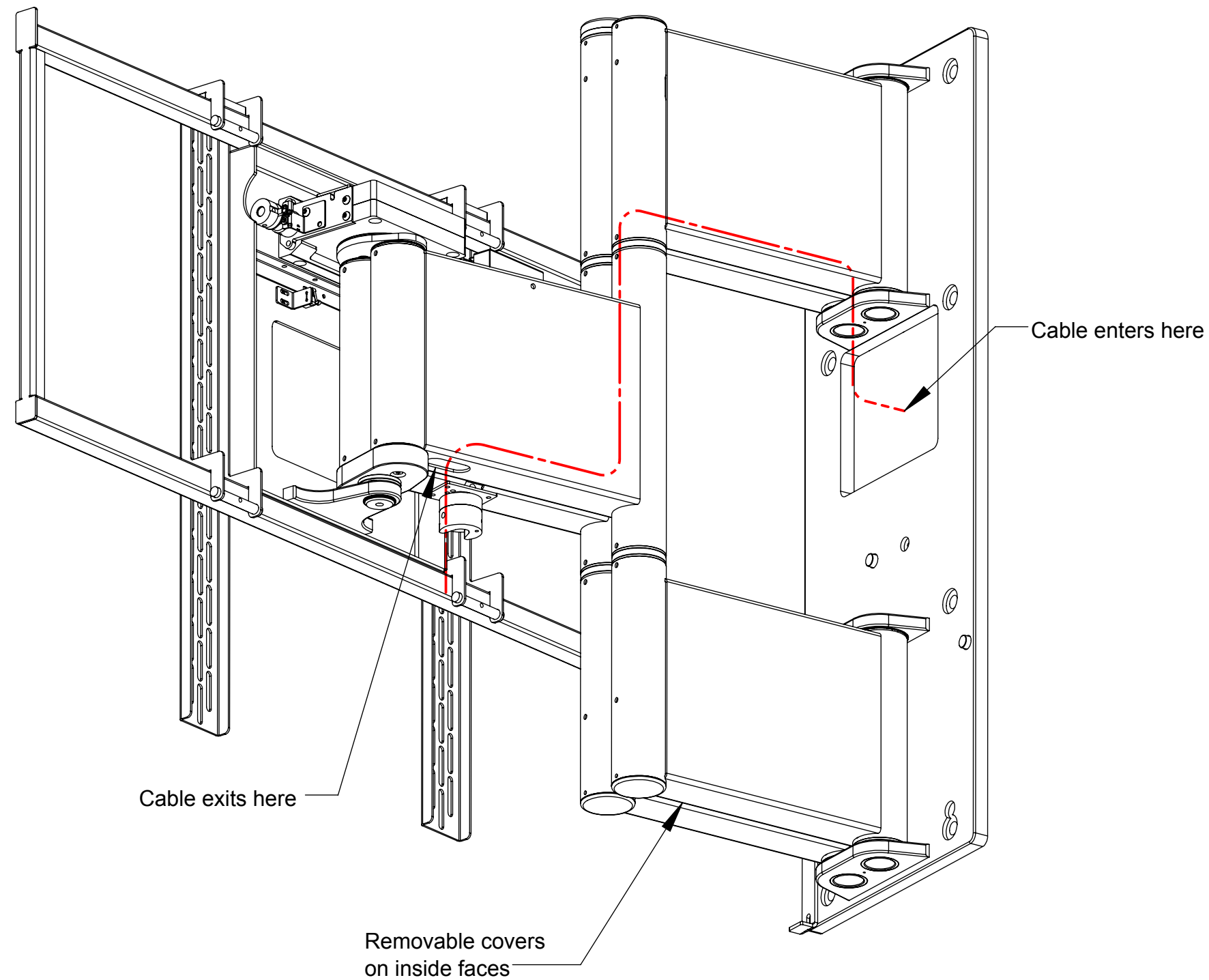


MAXIMUM MECHANISM SWIVEL ANGLE
NOTE: USE OF LARGER SCREENS REDUCE THIS MAXIMUM ANGLE

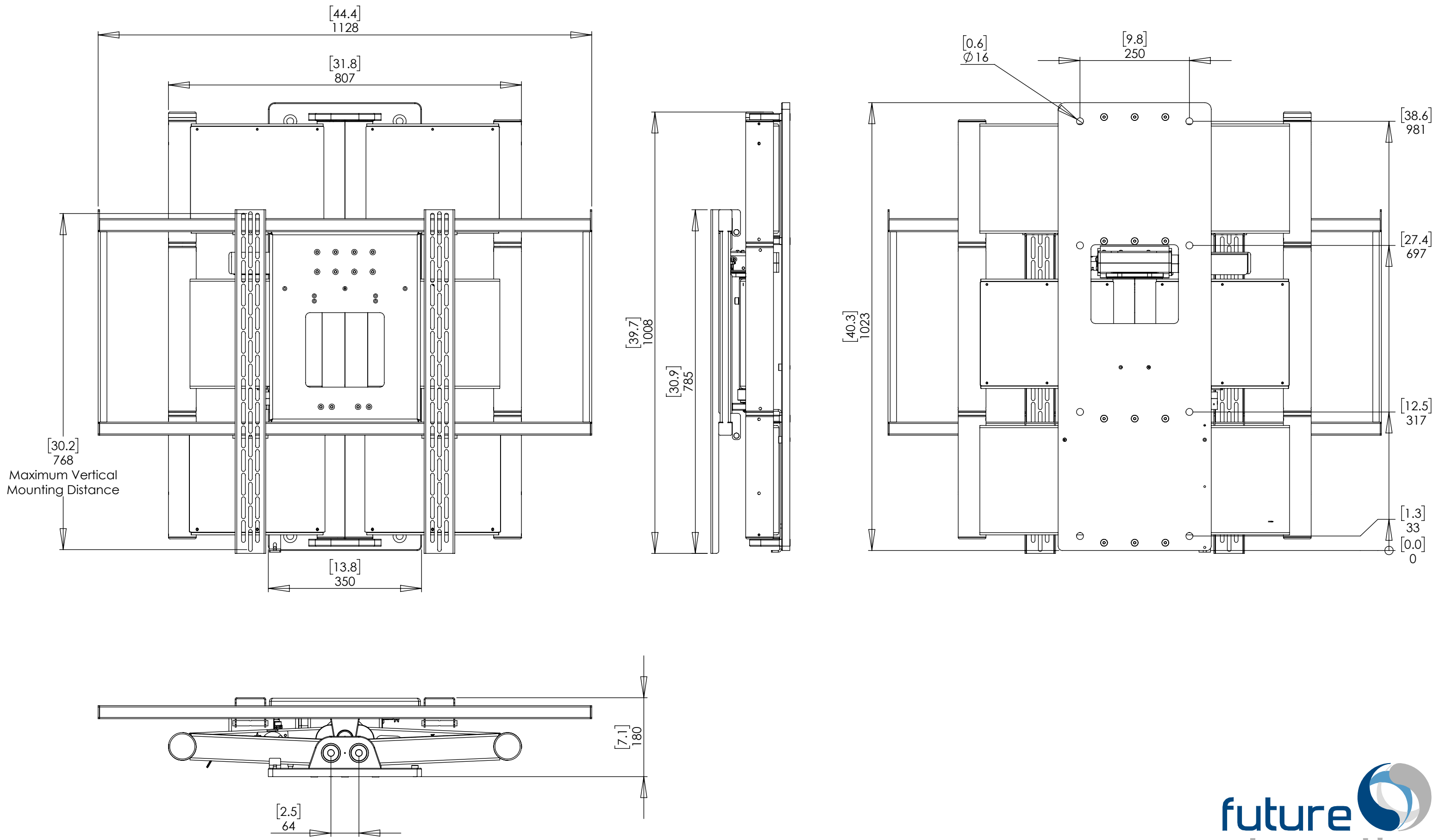


Cable Management

The HQA has removable arm covers on the inside faces that allow all cables to be run inside the arms of the mechanism to keep them out of sight.



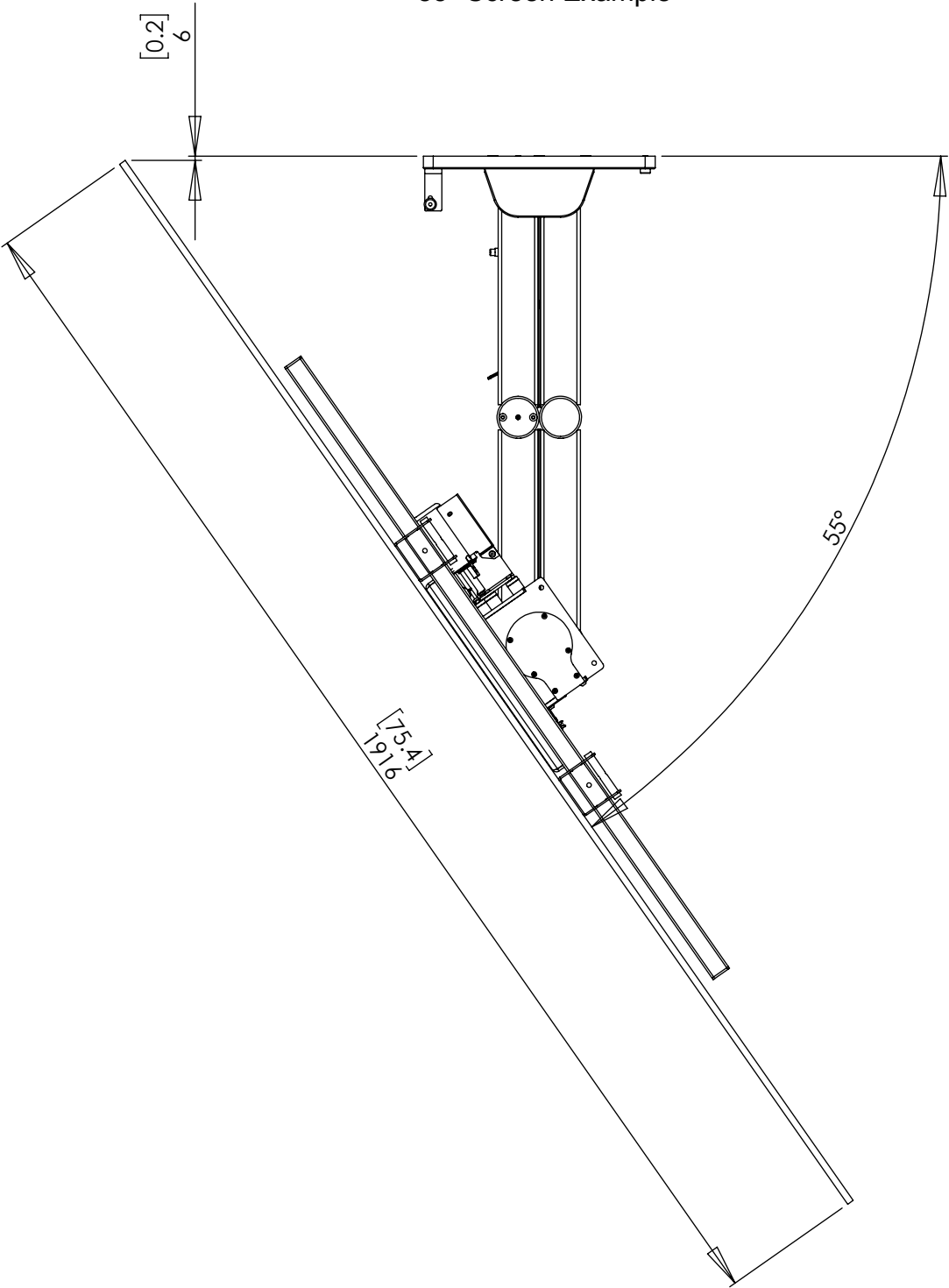
Overall Dimensions



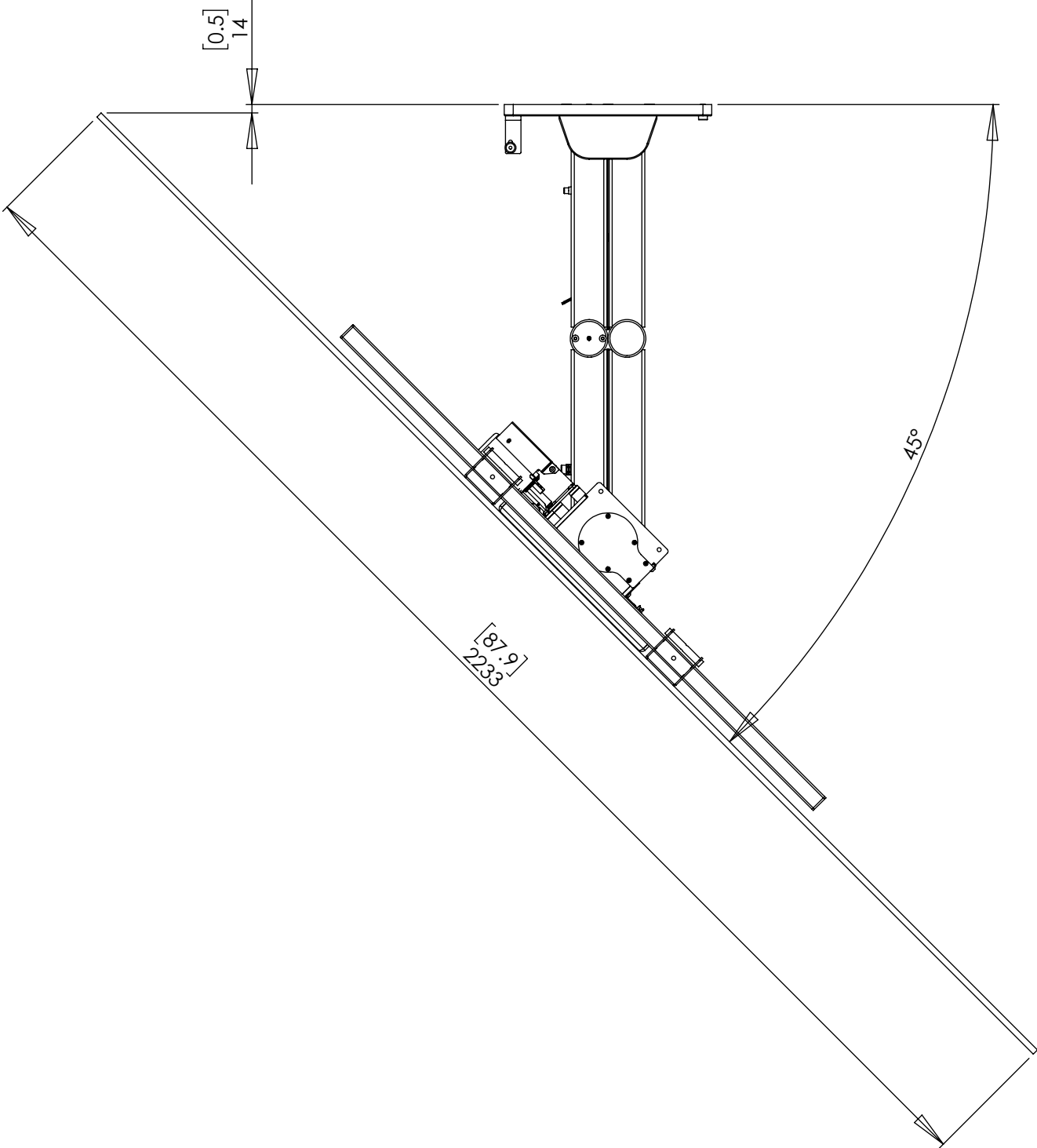
Swivel Angles

Examples below show the maximum swivel angles achieved based on differing screen sizes.

85" Screen Example



98" Screen Example



Recess Mounting

In order to mount the HQA in a recess, a minimum of 10mm perimeter gap from the screen is required, also ensure adequate ventilation for tight recesses.

When putting in recesses and using the bracket at the maximum angle, beware of obscuring part of the screen. With a deeper or wider screen the maximum angle will need to be reduced.

