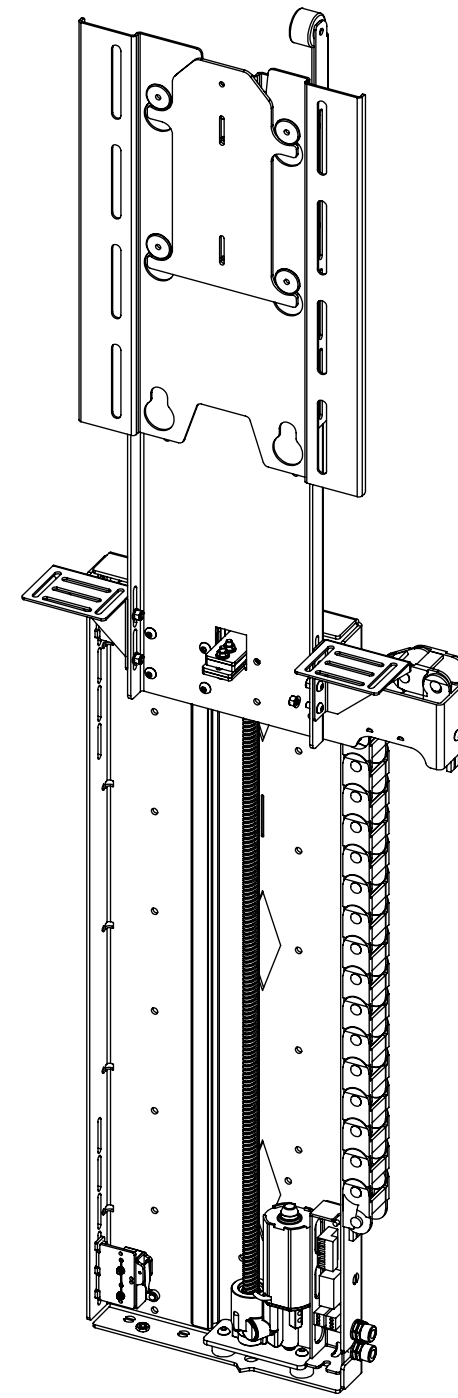
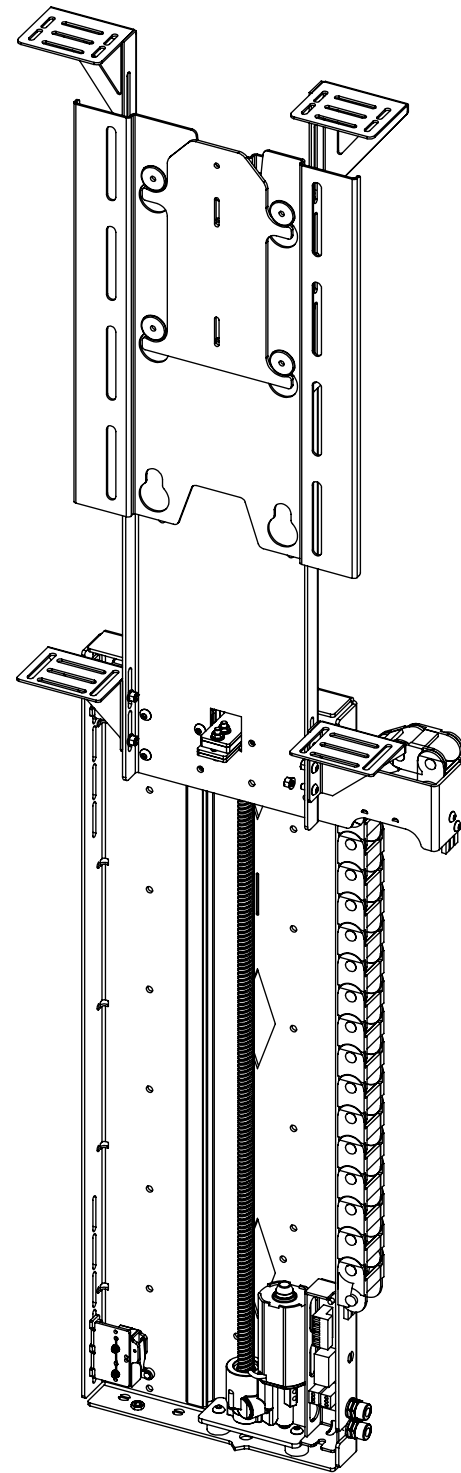


LSL-BE/PF 3

LIFT SYSTEM FOR BOX ENCLOSURE/PUSH FLAP



future automation



LSL-BE/PF 3

LIFT SYSTEM FOR BOX ENCLOSURE/PUSH FLAP



future automation

| SPECIFICATION | MEASUREMENTS |
|----------------------------------|--|
| Screen Sizes (Approx) | 40" |
| Maximum Weight Capacity | 25Kg (55lb) |
| Maximum Weight Capacity (Marine) | 16Kg (35lb) |
| Maximum Screen Height | 599mm (23 9/16") |
| Packaging Dimensions | 1050mm (41 5/16") x 550mm (21 5/8") x 250mm (9 13/16") |
| Shipping Weight | 20Kg (44lb) |
| Movement Type | Motorised |
| Power Supply Required | 110V or 240V AC |
| Power Consumption | 250-500W |
| Power Consumption Standby | 3W |
| Decibel Rating | 58dB |
| | |
| Mounting Patterns Supported | VESA 200 W x 300, 200 H |
| Control Options | IR Remote, RS232, Contact Closure |
| Product Options / Features | Specific B&O and Loewe mounts / adapters, Custom RAL paint finishes, Outdoor version |
| Package Contents | Mechanism, IR remote control, Push Flap Kit, Box Enclosure Kit |
| Marine Suitable | Yes (Indoor) |

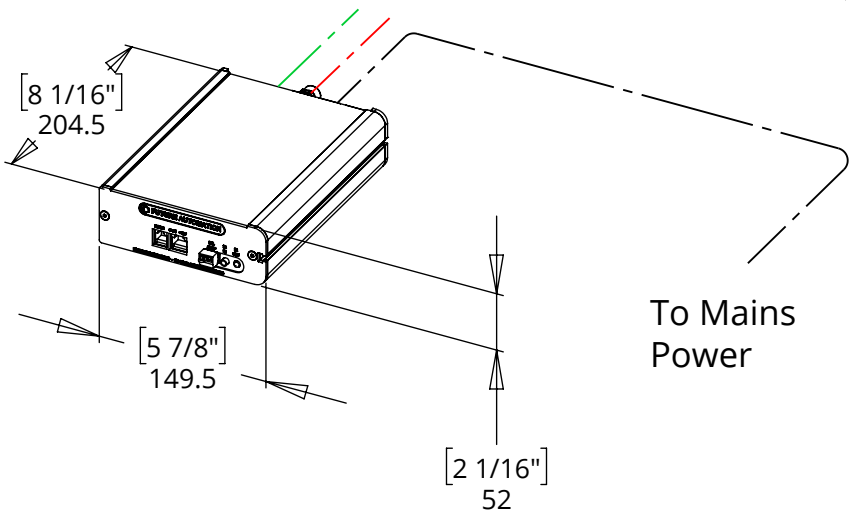
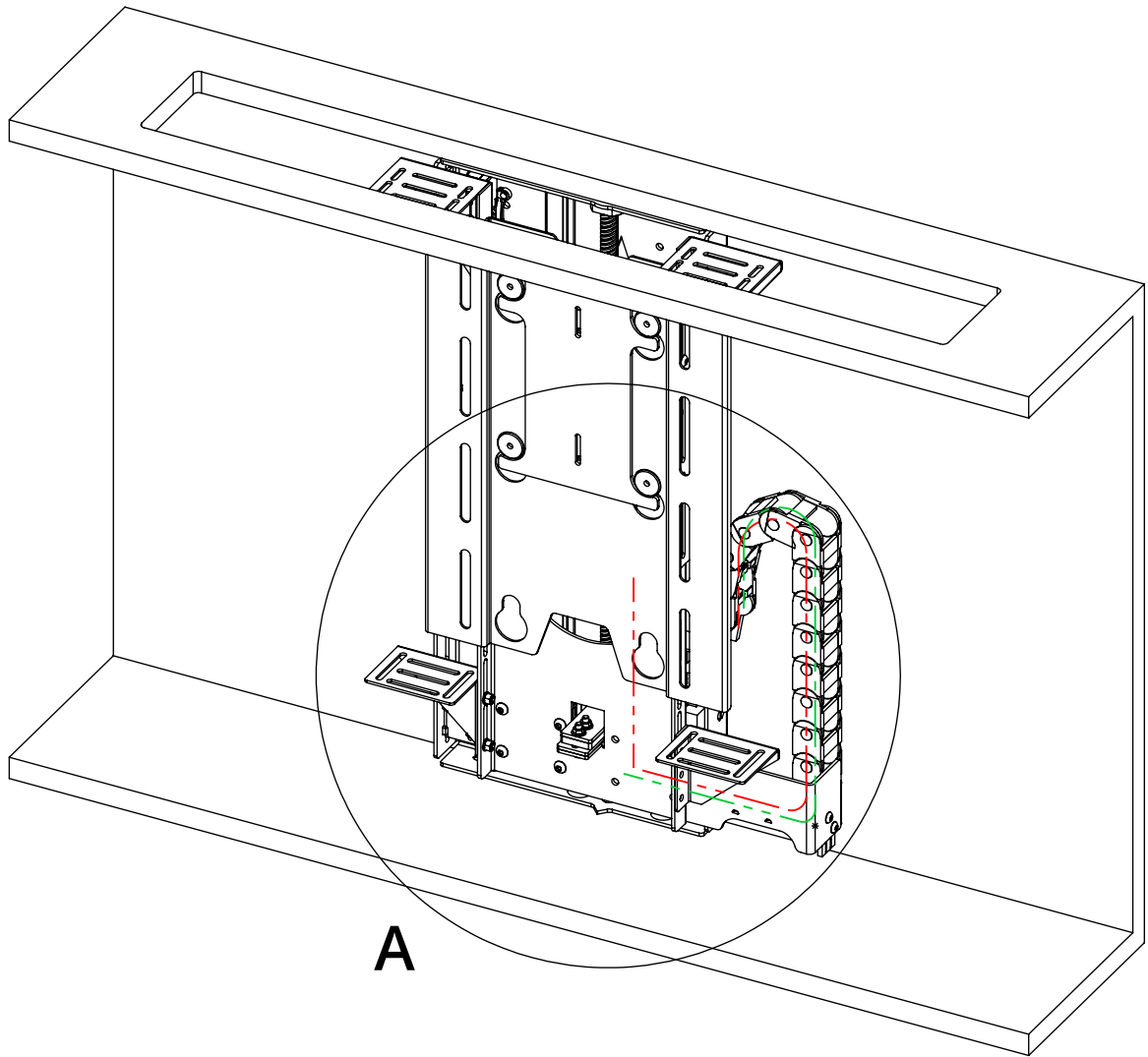
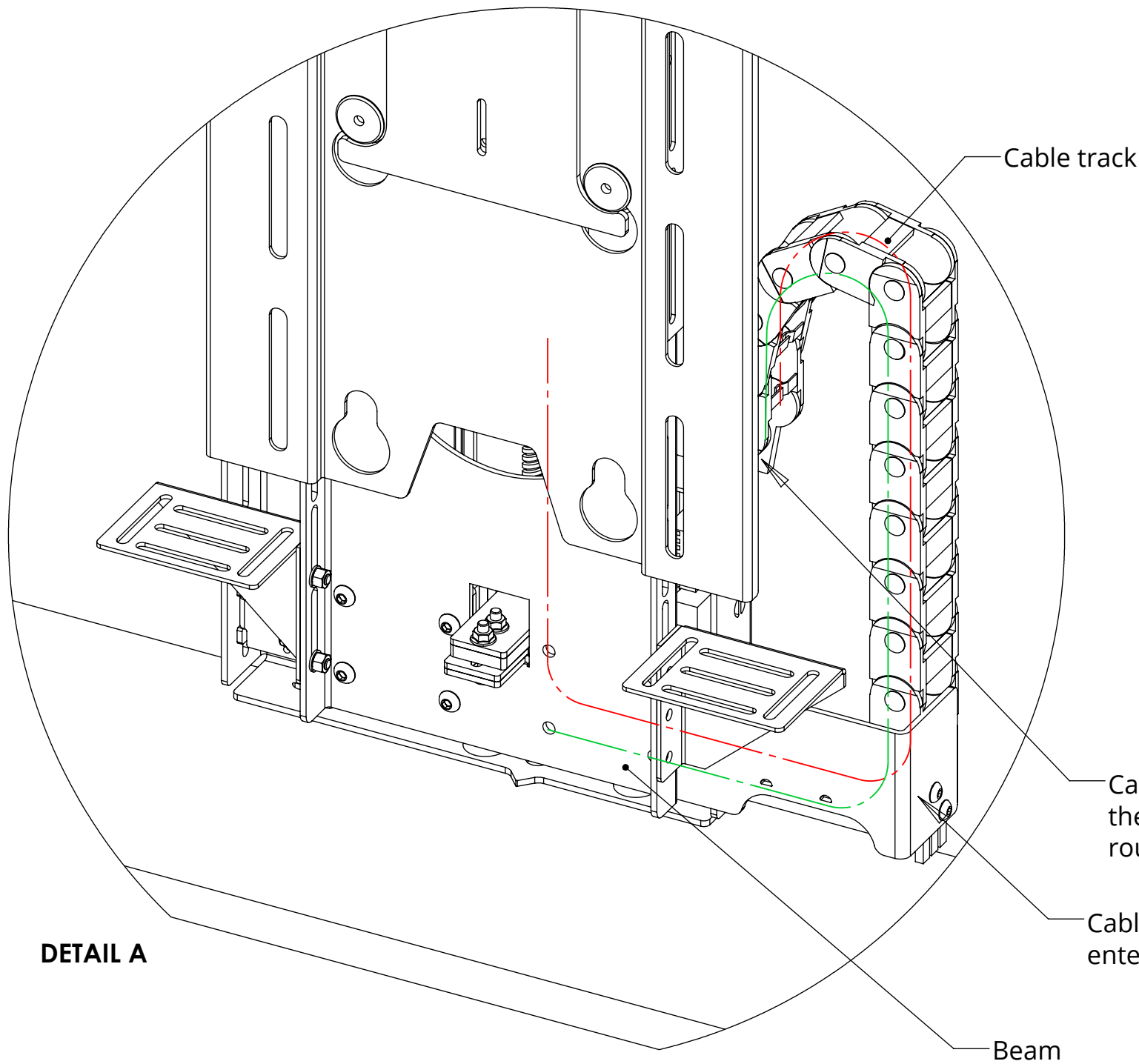
LSL-BE/PF 3

LIFT SYSTEM FOR BOX ENCLOSURE/PUSH FLAP

CABLE ROUTING

Screen cables are routed behind the Base Panel and out the right side of the Beam into the Cable Track. Cables must be routed carefully to prevent any interference with the LSL beam as it operates.

Screen and Mechanism cables should be routed to a control box in the bottom of the cabinet.



Cables can be secured to the back of the cabinet and routed to the control box

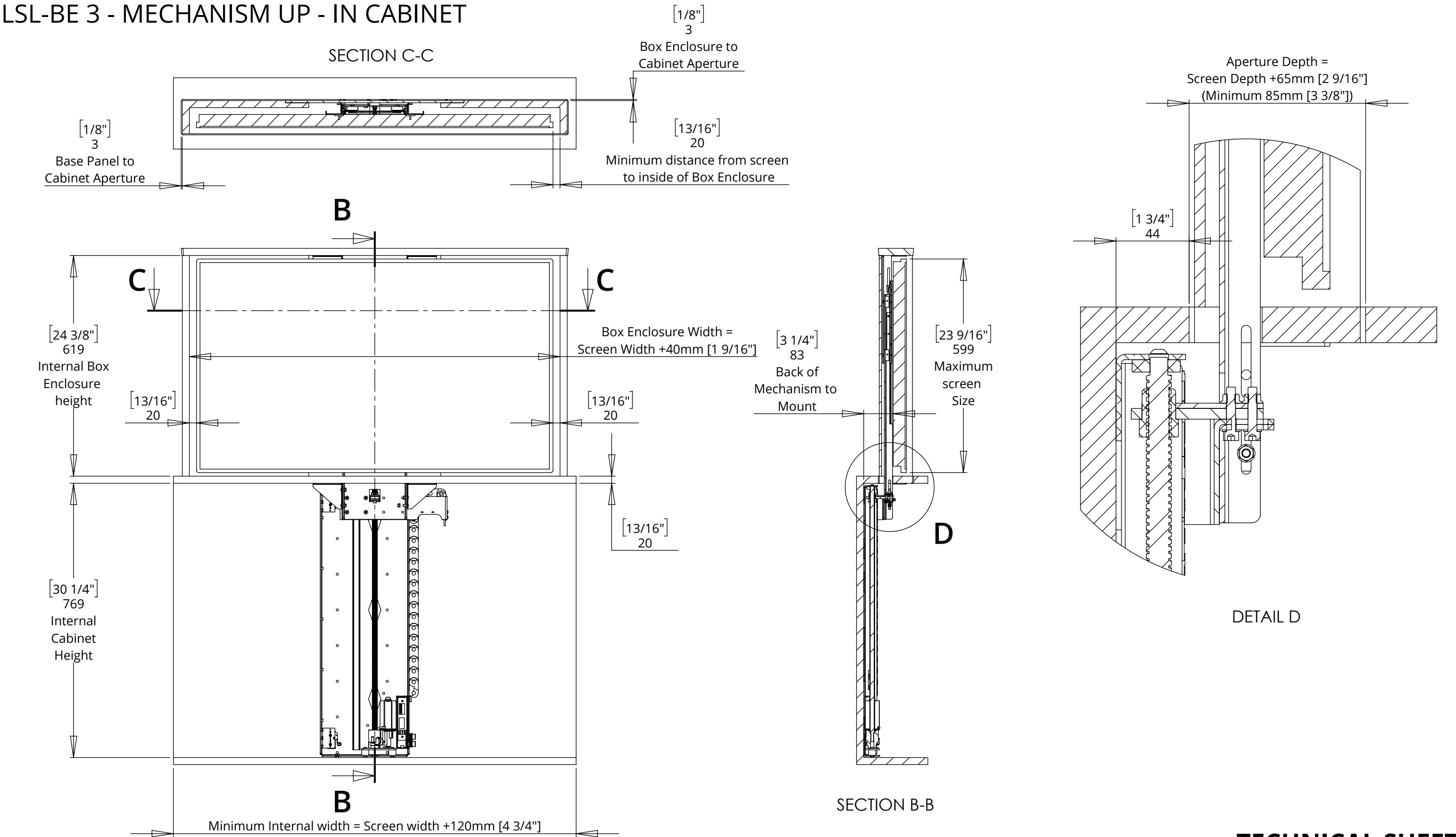
Cables exit Beam and enter Cable Track

DETAIL A

LSL-BE/PF 3

LIFT SYSTEM FOR BOX ENCLOSURE/PUSH FLAP

LSL-BE 3 - MECHANISM UP - IN CABINET



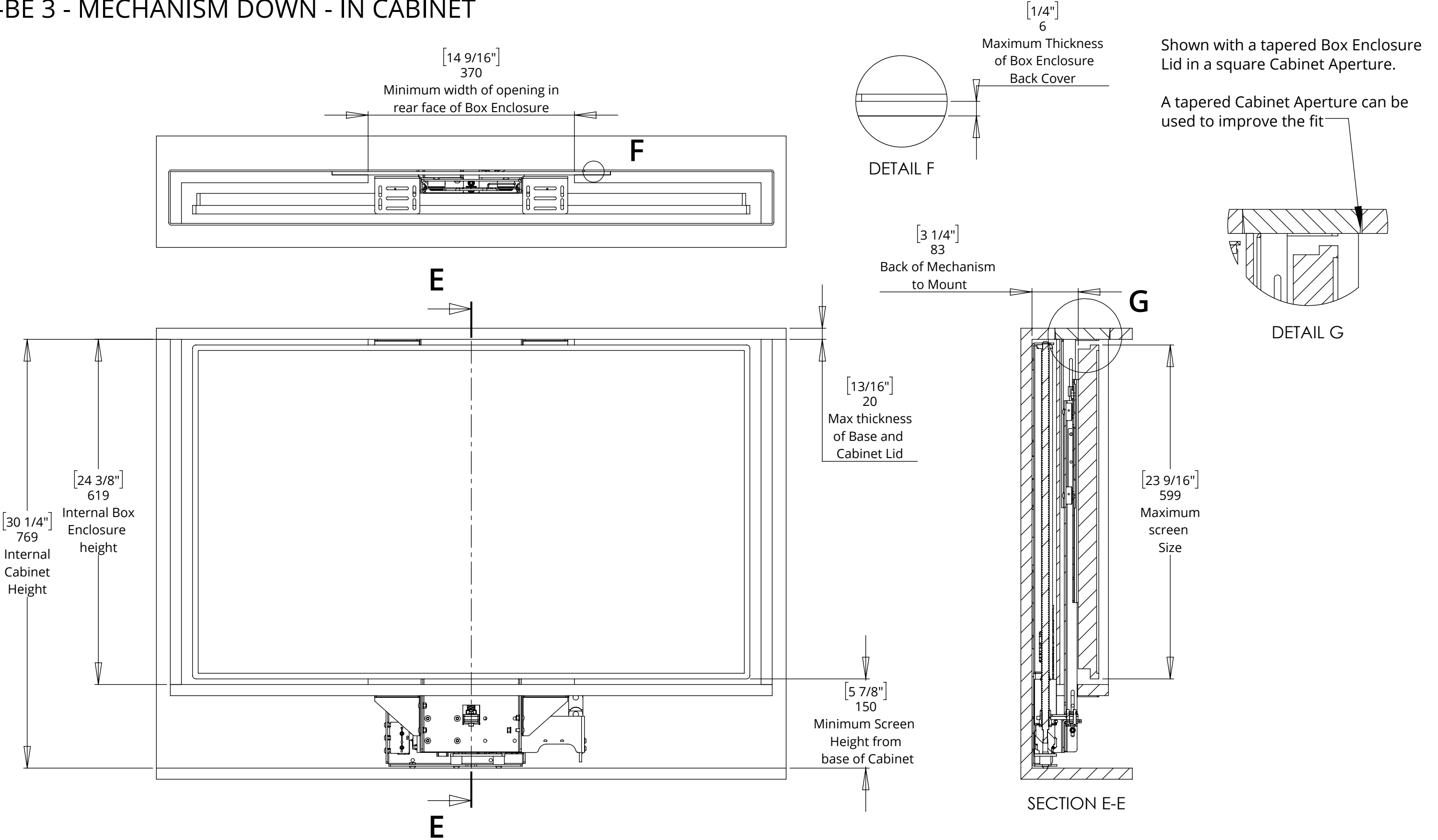
LSL-BE/PF 3

LIFT SYSTEM FOR BOX ENCLOSURE/PUSH FLAP



future automation

LSL-BE 3 - MECHANISM DOWN - IN CABINET



LSL-BE/PF 3

LIFT SYSTEM FOR BOX ENCLOSURE/PUSH FLAP

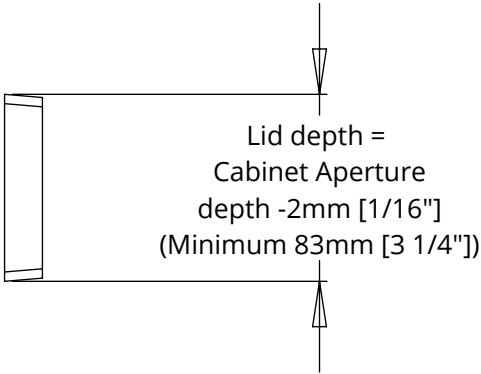
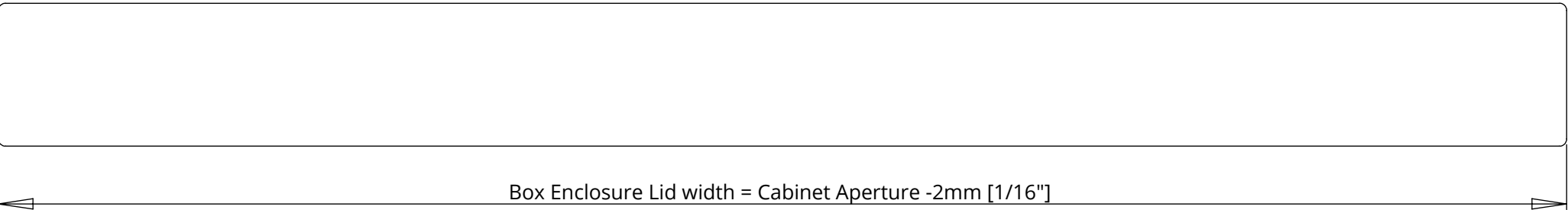


future automation

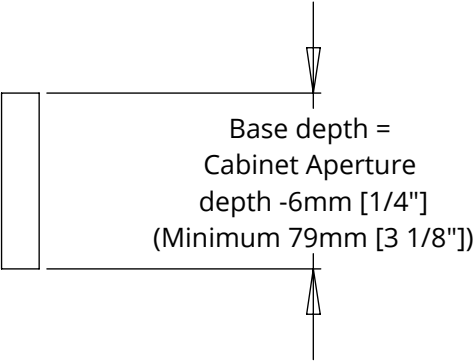
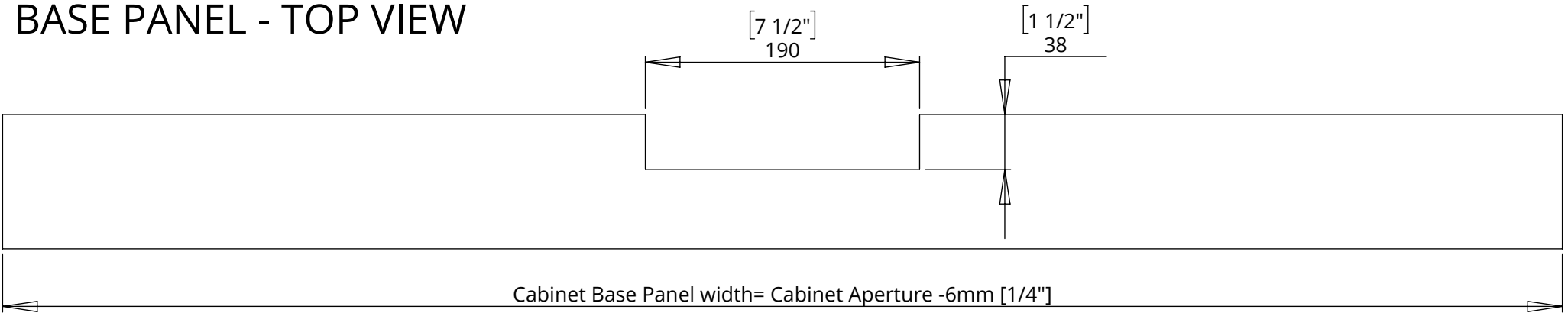
LSL-BE 3 - BASE PANEL & LID DETAILS

NOTE: A tapered Box Enclosure Lid creates a good fit in the Cabinet Aperture and helps the Box Enclosure to locate within the Cabinet.

BOX ENCLOSURE LID (TAPERED) - TOP VIEW



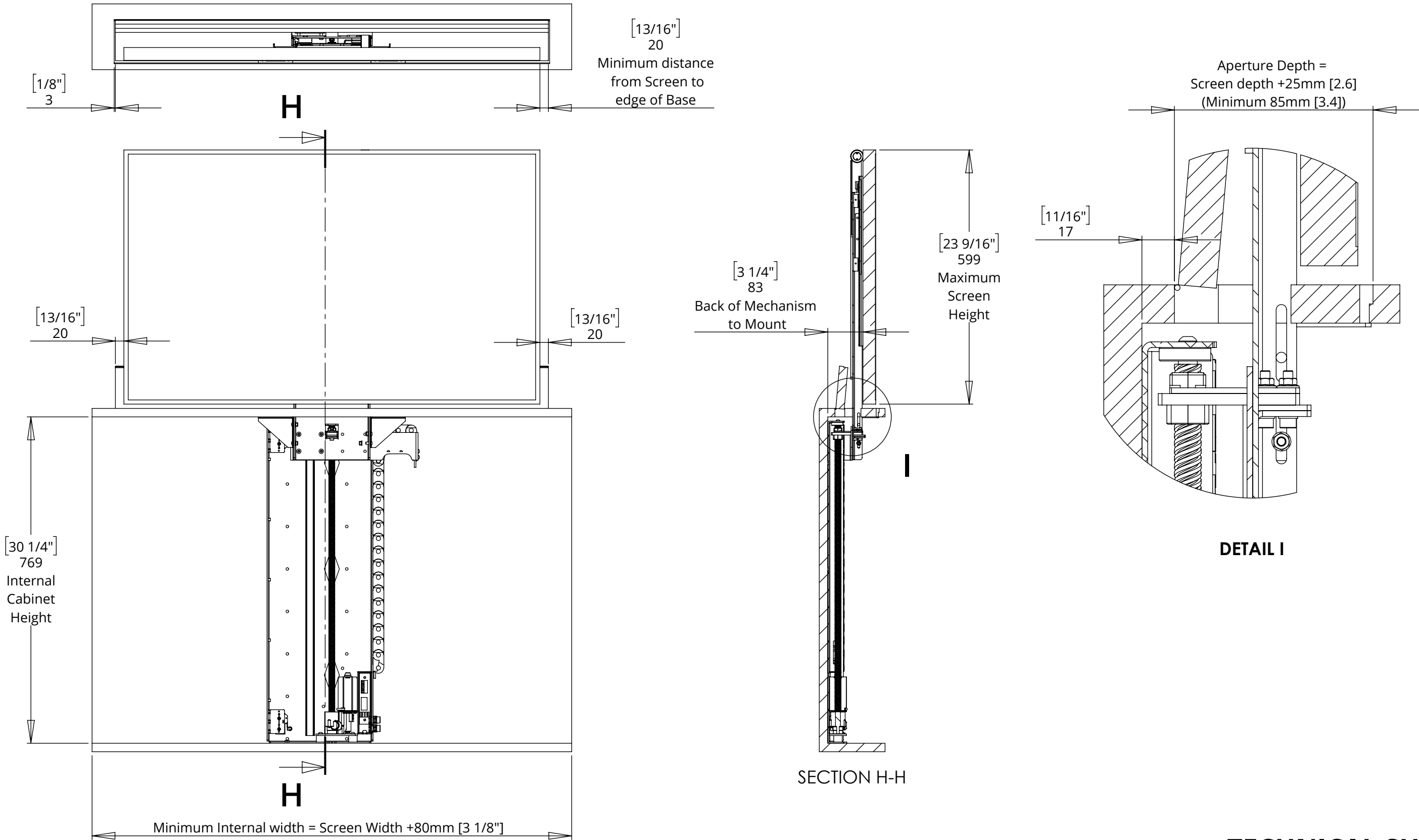
BASE PANEL - TOP VIEW



LSL-BE/PF 3

LIFT SYSTEM FOR BOX ENCLOSURE/PUSH FLAP

LSL-BE 3 - MECHANISM UP - IN CABINET



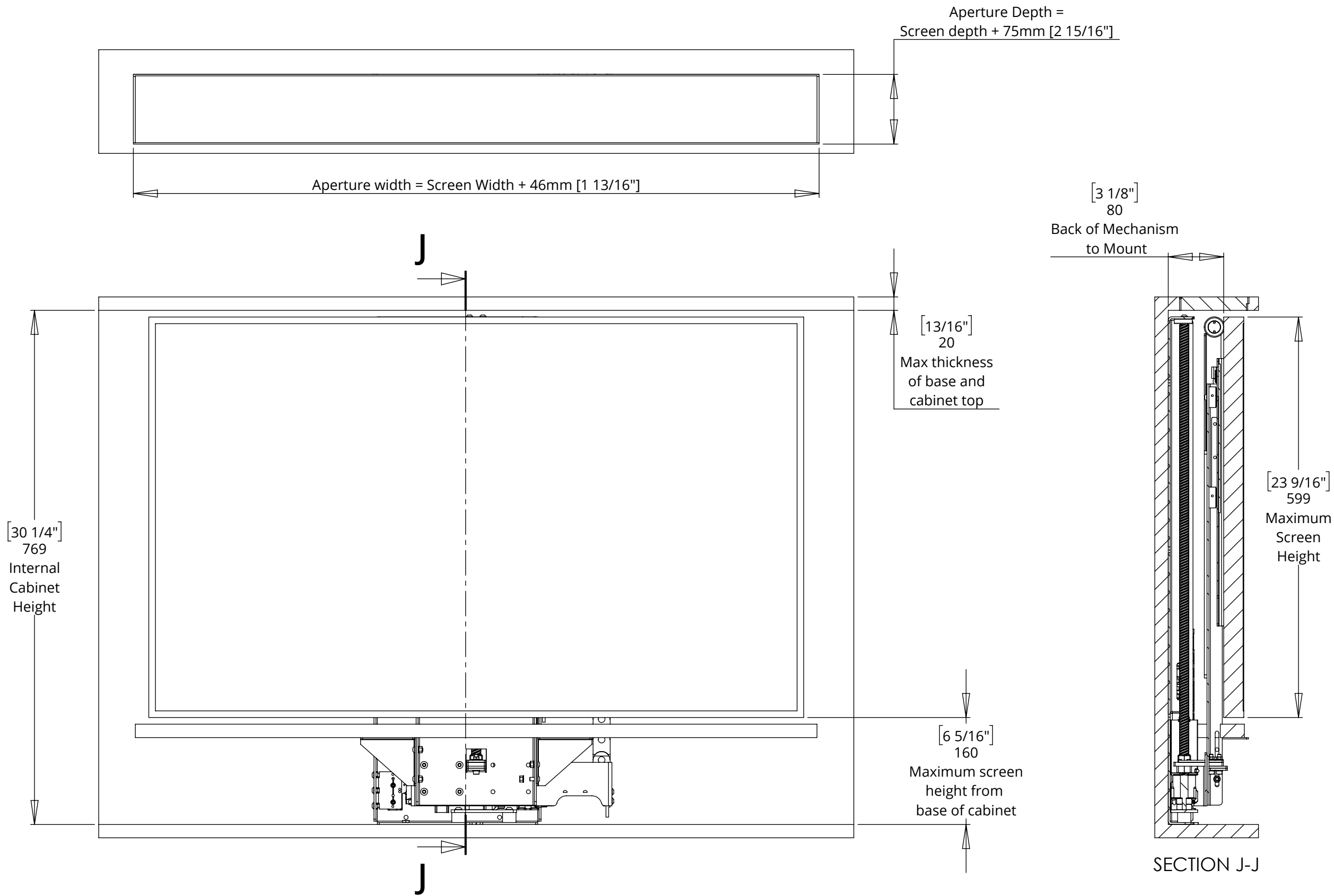
LSL-BE/PF 3

LIFT SYSTEM FOR BOX ENCLOSURE/PUSH FLAP



future automation

LSL-BE 3 - MECHANISM DOWN - IN CABINET



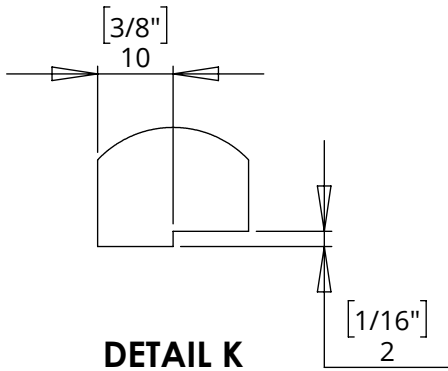
LSL-BE/PF 3

LIFT SYSTEM FOR BOX ENCLOSURE/PUSH FLAP

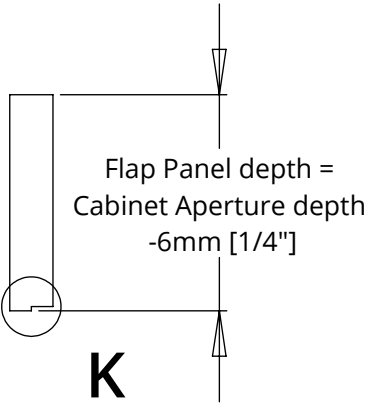
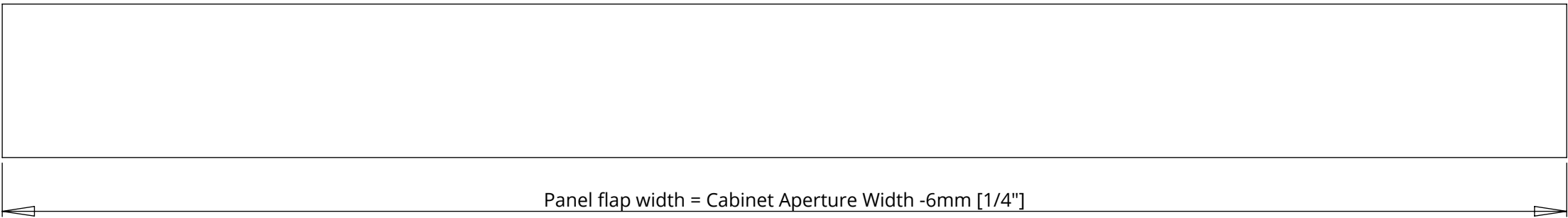


future automation

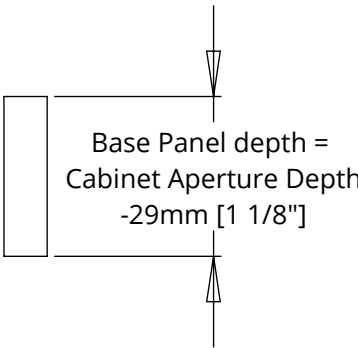
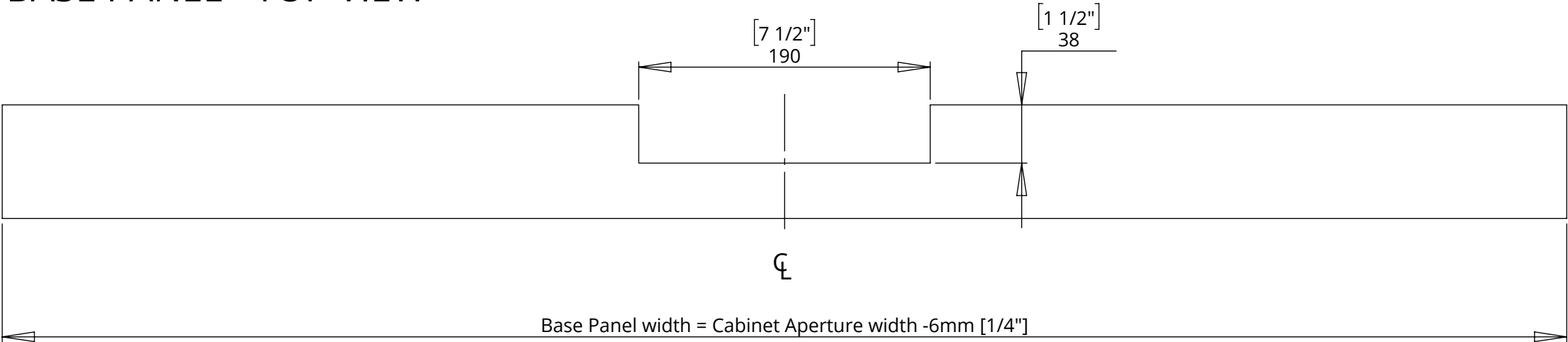
LSL-PF 3 - BASE PANEL & LID DETAILS



PUSH FLAP LID - TOP VIEW



BASE PANEL - TOP VIEW



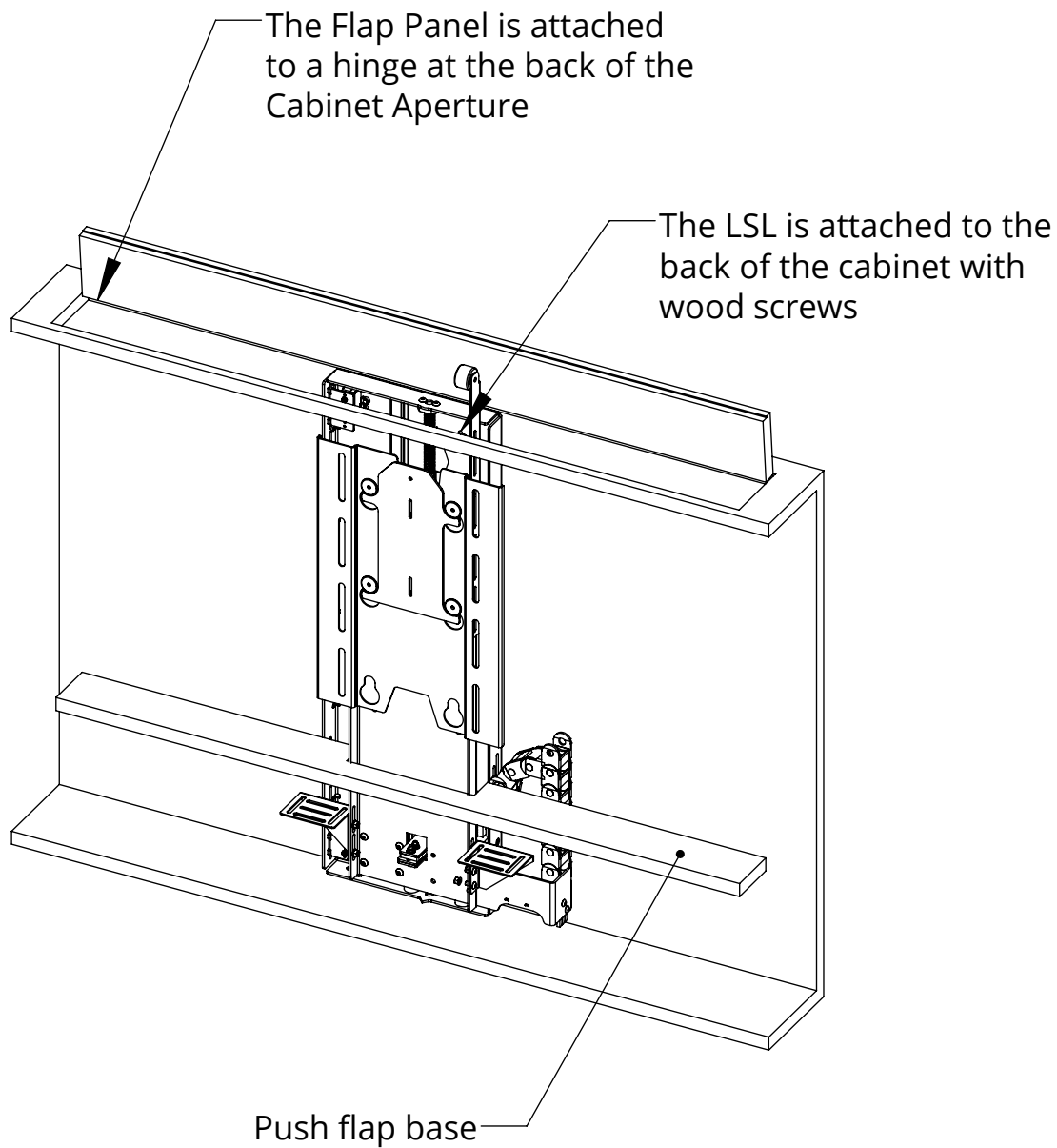
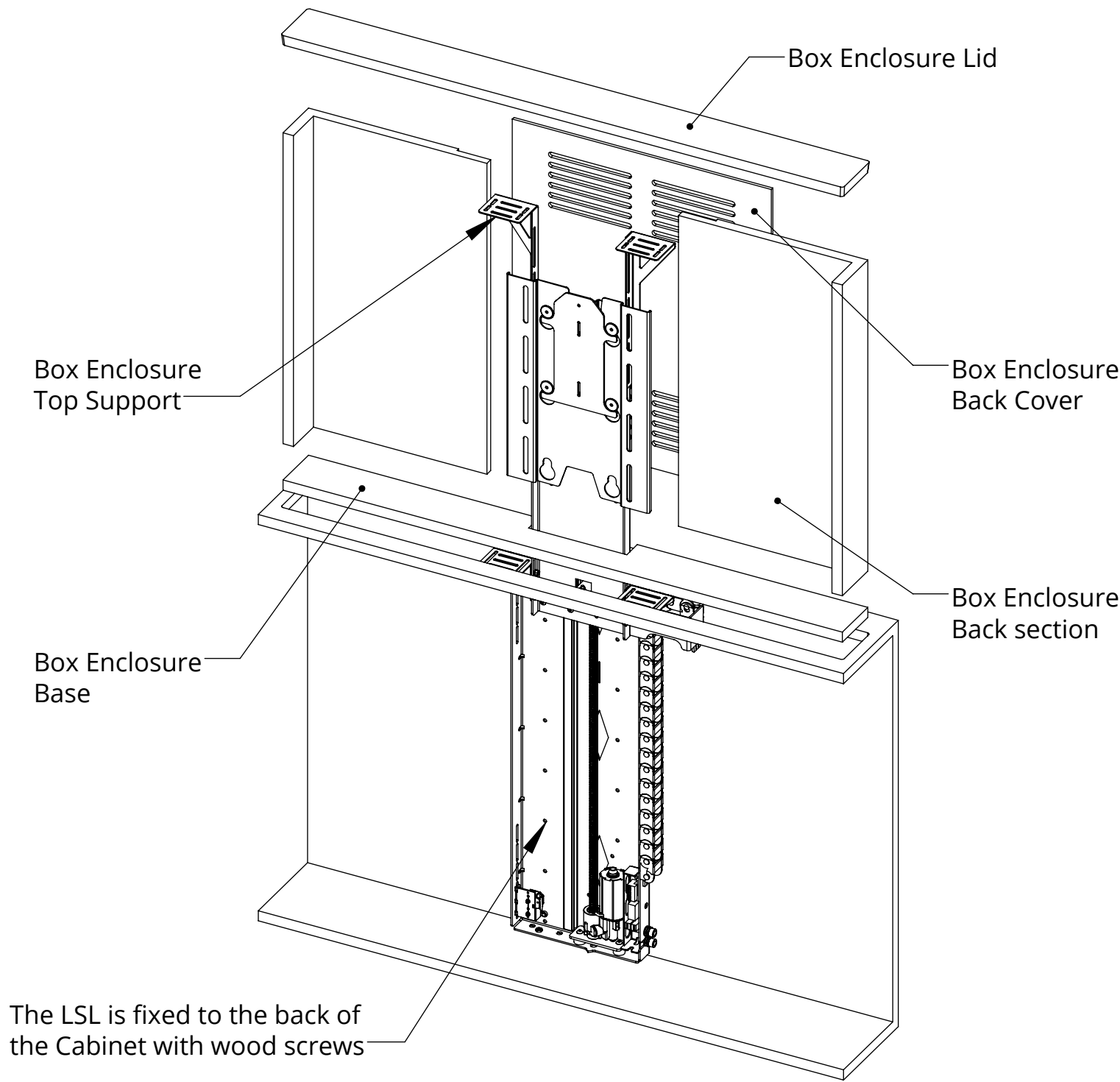
LSL-BE/PF 3

LIFT SYSTEM FOR BOX ENCLOSURE/PUSH FLAP



future automation

MECHANISM INSTALLATION OVERVIEW



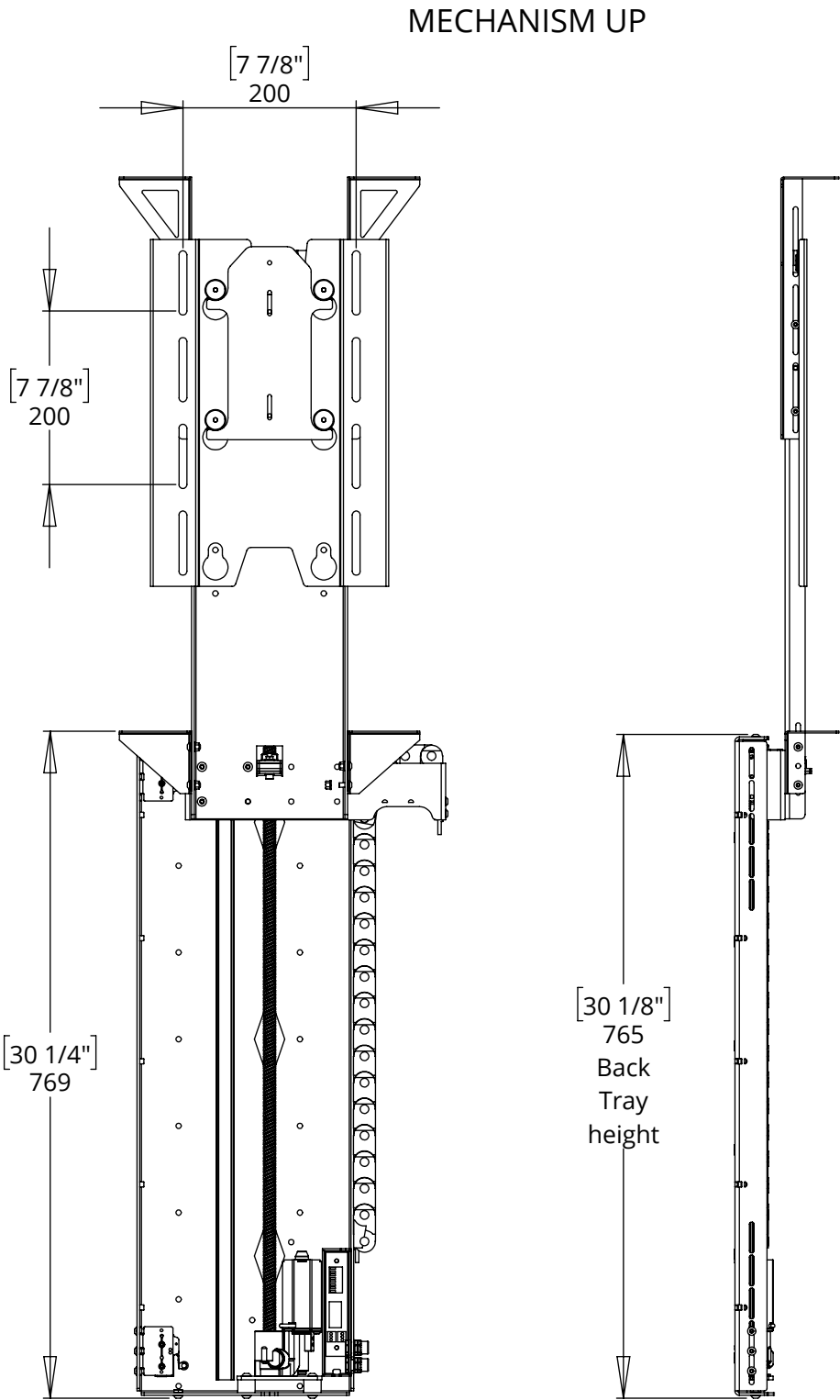
LSL-BE/PF 3

LIFT SYSTEM FOR BOX ENCLOSURE/PUSH FLAP



future automation

OVERALL MECHANISM DIMENSIONS



MECHANISM DOWN

