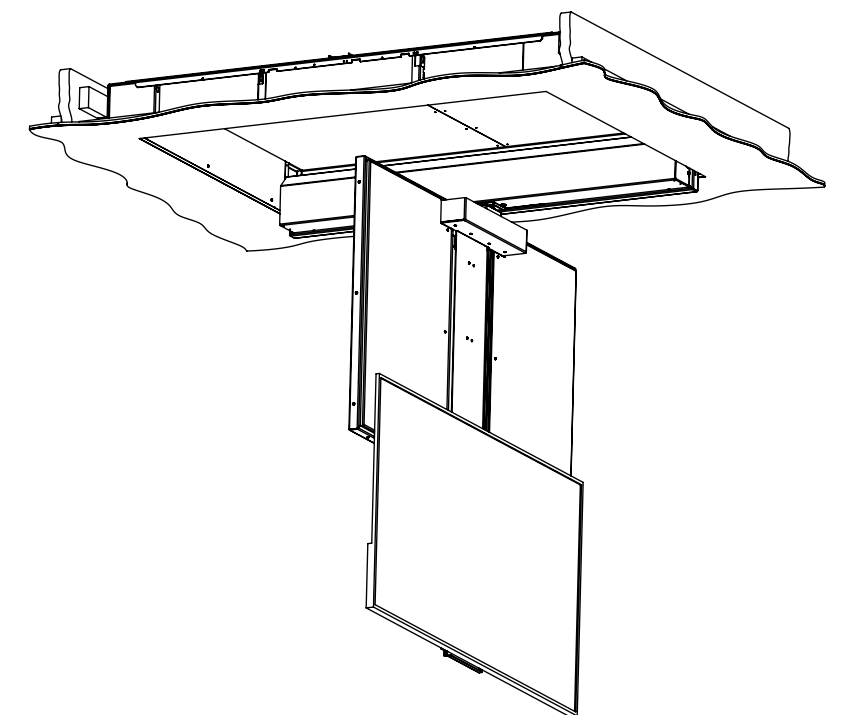
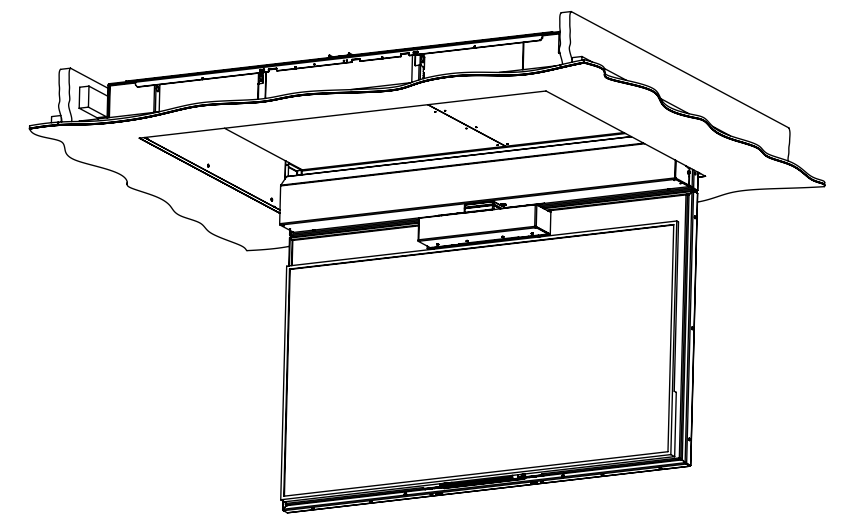
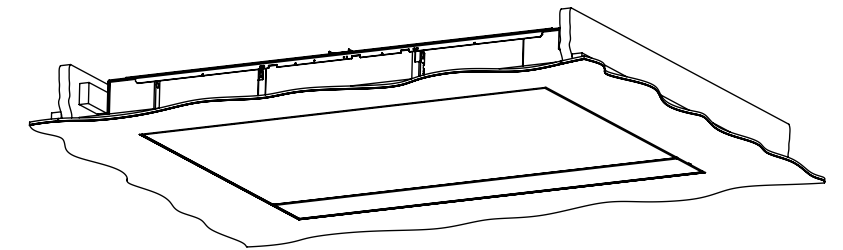
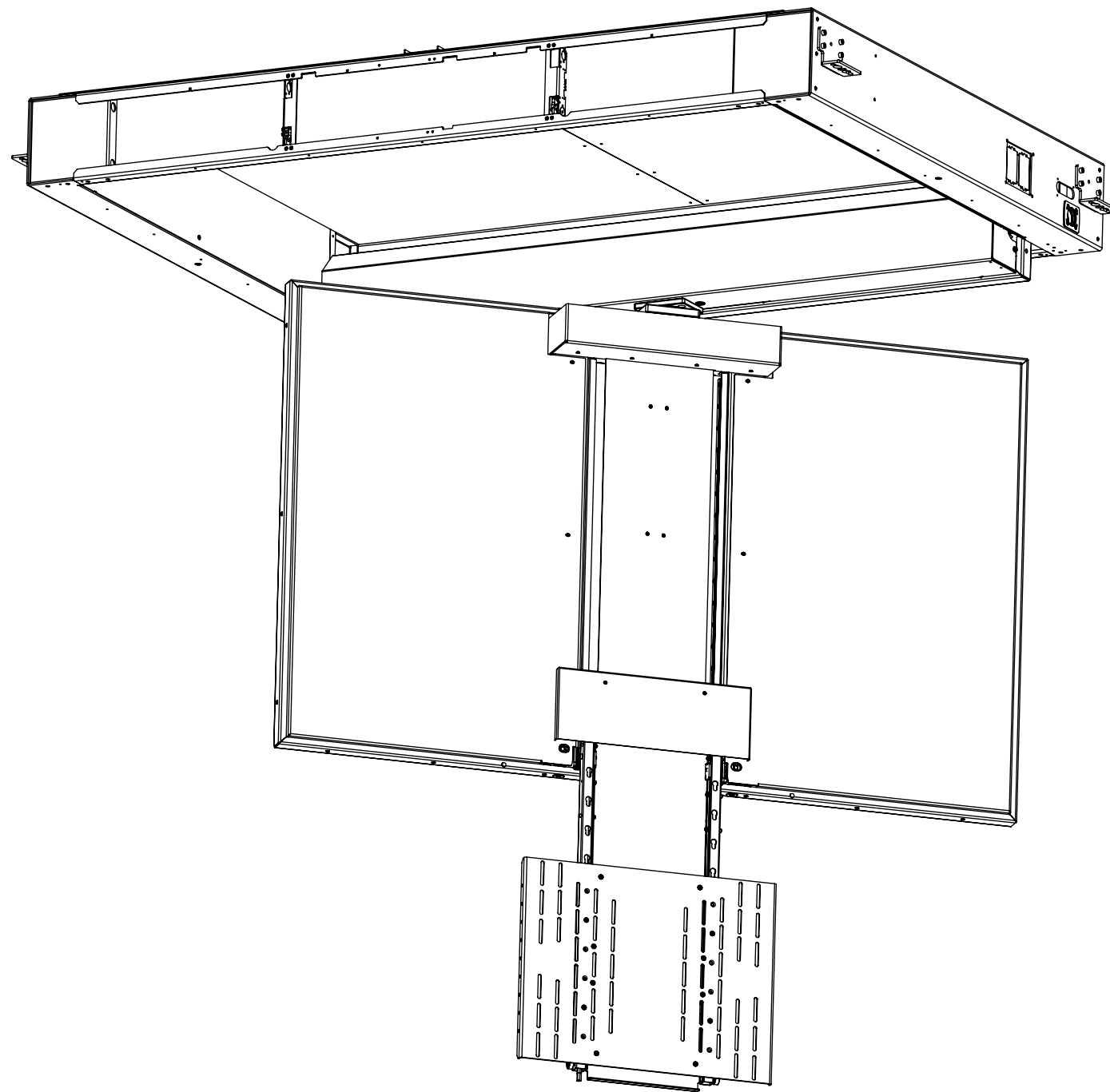


CHRST8-RES

RESIDENTIAL CEILING HINGE RANGE WITH SWIVEL AND TELESCOPE



CHRST8-RES

RESIDENTIAL CEILING HINGE RANGE

WITH SWIVEL AND TELESCOPE

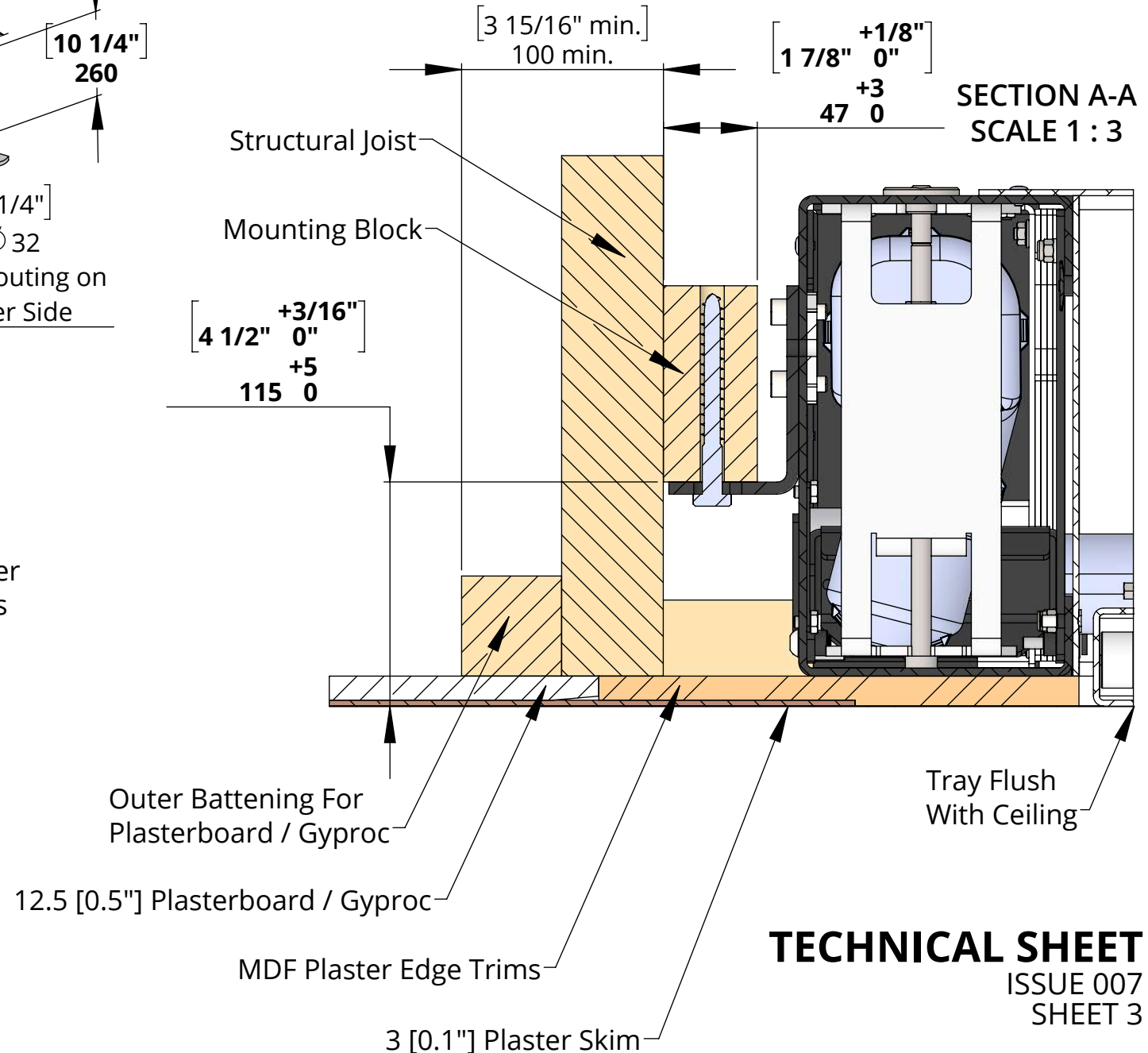
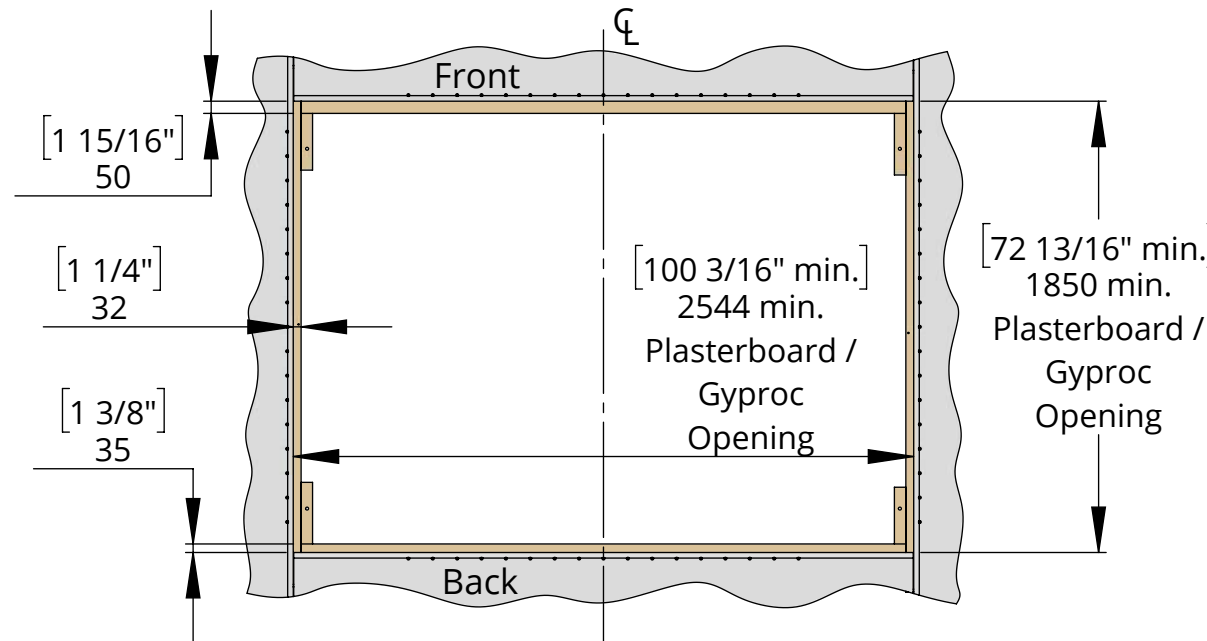
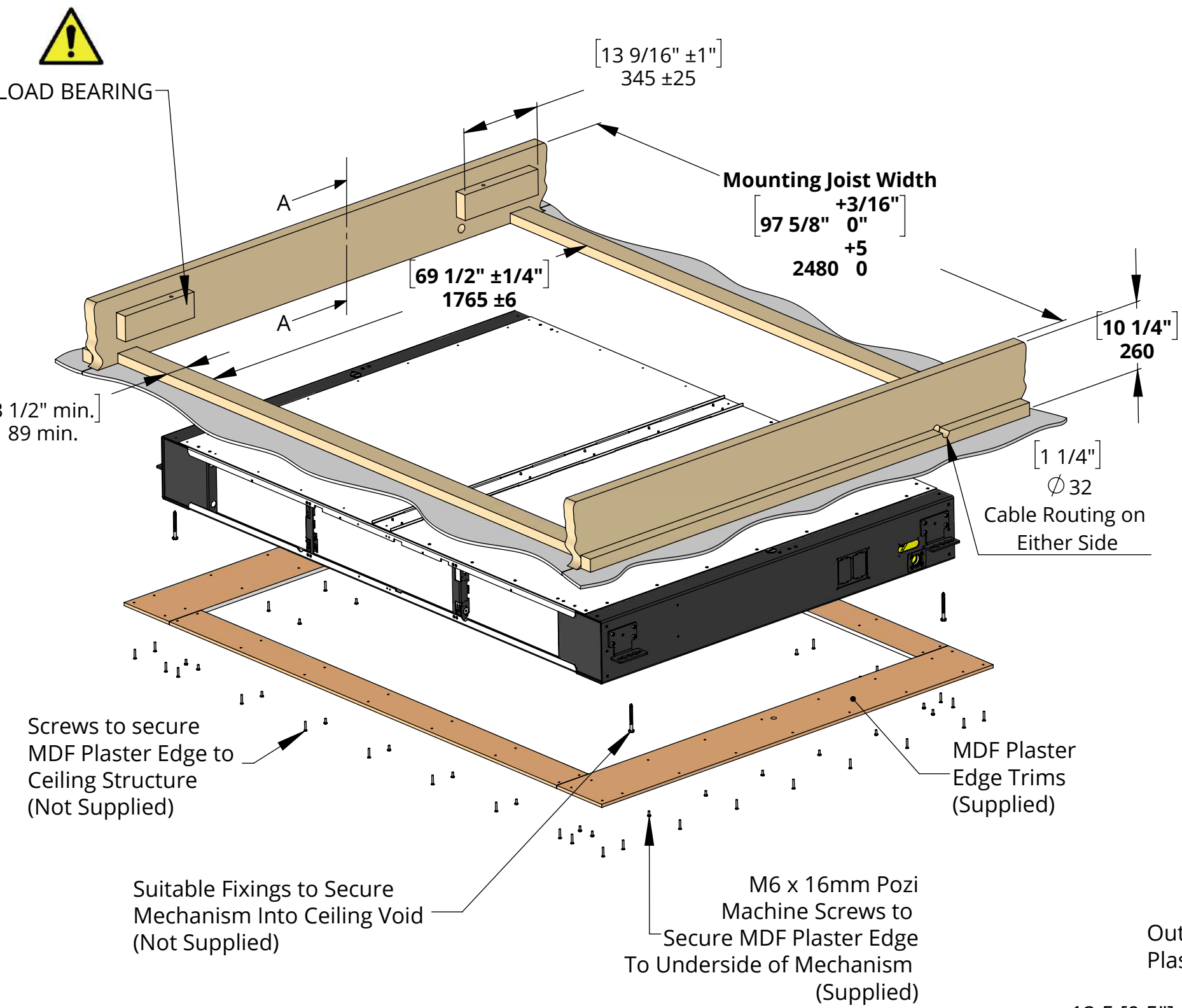
SPECIFICATION	MEASUREMENTS
Product Dimensions	2474mm [97 6/16"] W x 1665mm [65 9/16"] L x 270mm [10 10/16"] D
Product Weight	280Kg [617lb]
Maximum Screen Size	1980mm [77 15/16"] W x 1090mm [42 15/16"] L x 150mm [5 14/16"] D
Maximum Weight Capacity	100Kg [221lb] Max. <i>*Assuming Screen Weight Biased Low (3/4 Screen Height)</i>
Packaging Dimensions	2510mm [99"] W x 1840mm [72 7/16"] L x 490mm [19 5/16"] D
Shipping Weight	453Kg [998lb]
Maximum Rotation	90 ° on Hinge, 180° CW and CCW on Swivel
Movement Type	Motorised
Control System	Housed Internally - Accessible by Internal Access Hatch
Power Supply Required	110V - 240V AC 50/60Hz
Power Consumption Max.	720W
Power Consumption Standby	3W
Mounting Patterns Supported	VESA 600, 500, 400, 300, 200 W x 400, 300, 200 H
Control Options	IR Remote, RS232, Contact Closure
Product Options / Features	Specific B&O and Loewe mounts / adapters, Custom RAL paint finishes, Marine suitable version
Package Contents	Mechanism, IR remote control
Environment	Residential / Commerical
Colour	WHITE - RAL9910 Satin Finish
Marine Suitable	No - Marine Indoor and Outdoor Versions Available

CHRST8-RES

RESIDENTIAL CEILING HINGE RANGE

WITH SWIVEL AND TELESCOPE

OPTION 1 - FIXING TO WOODEN BEAMS



CHRST8-RES

RESIDENTIAL CEILING HINGE RANGE

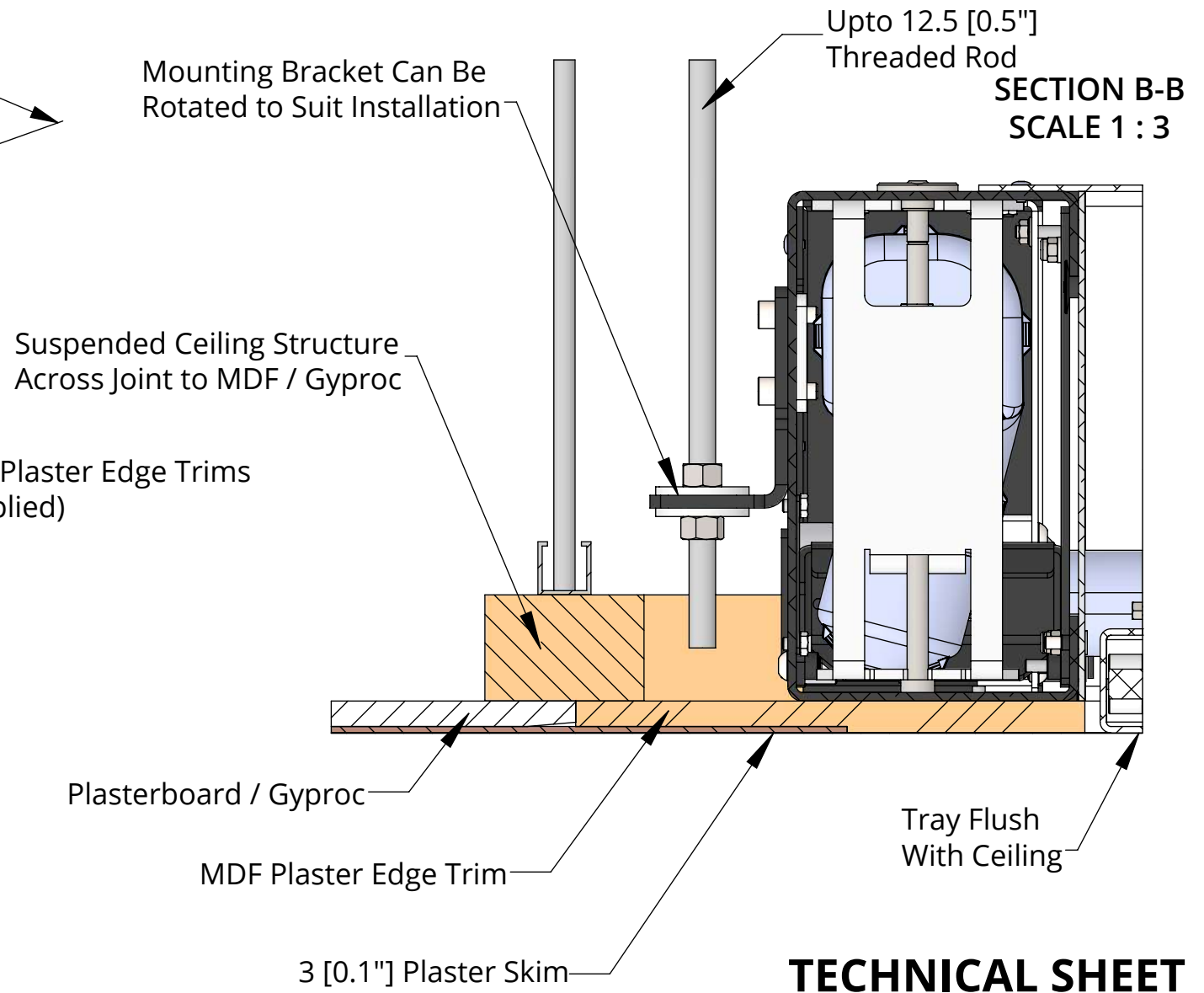
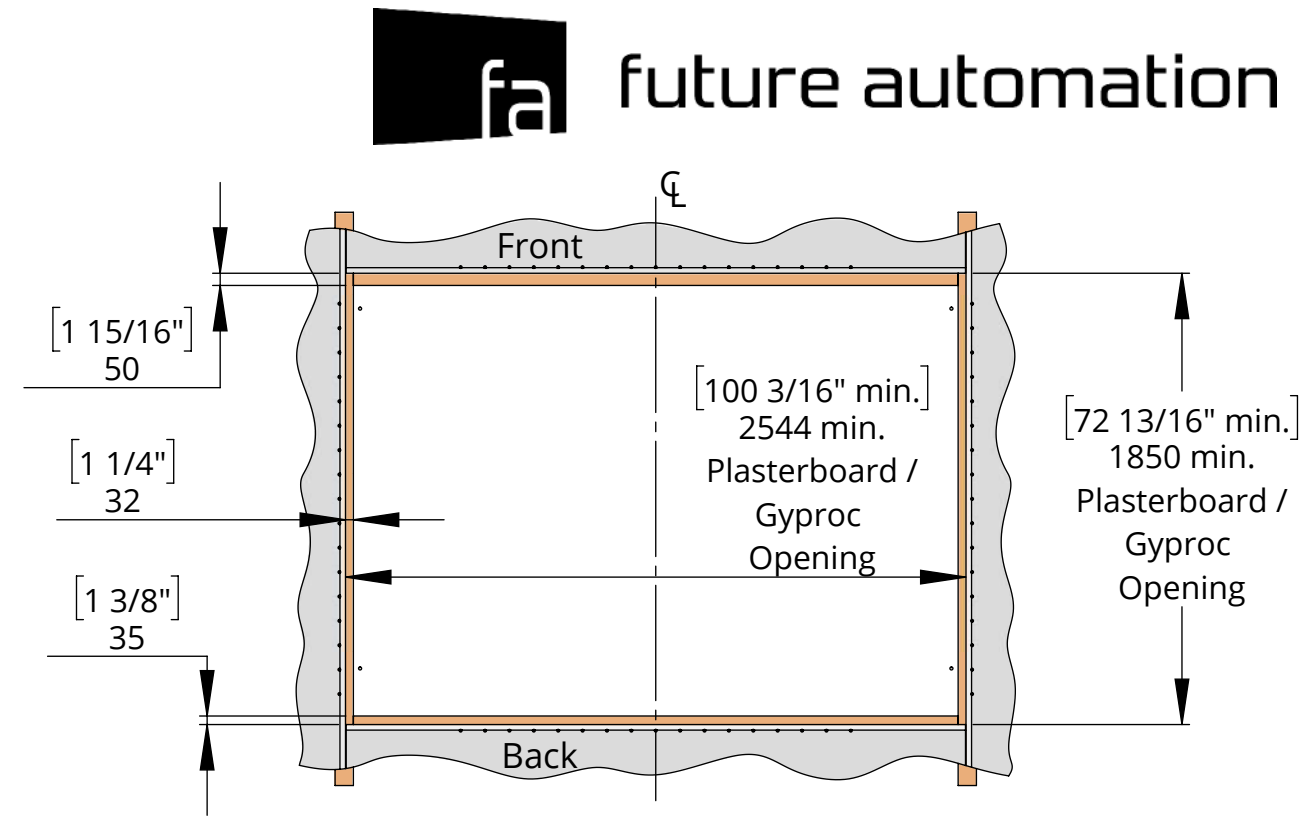
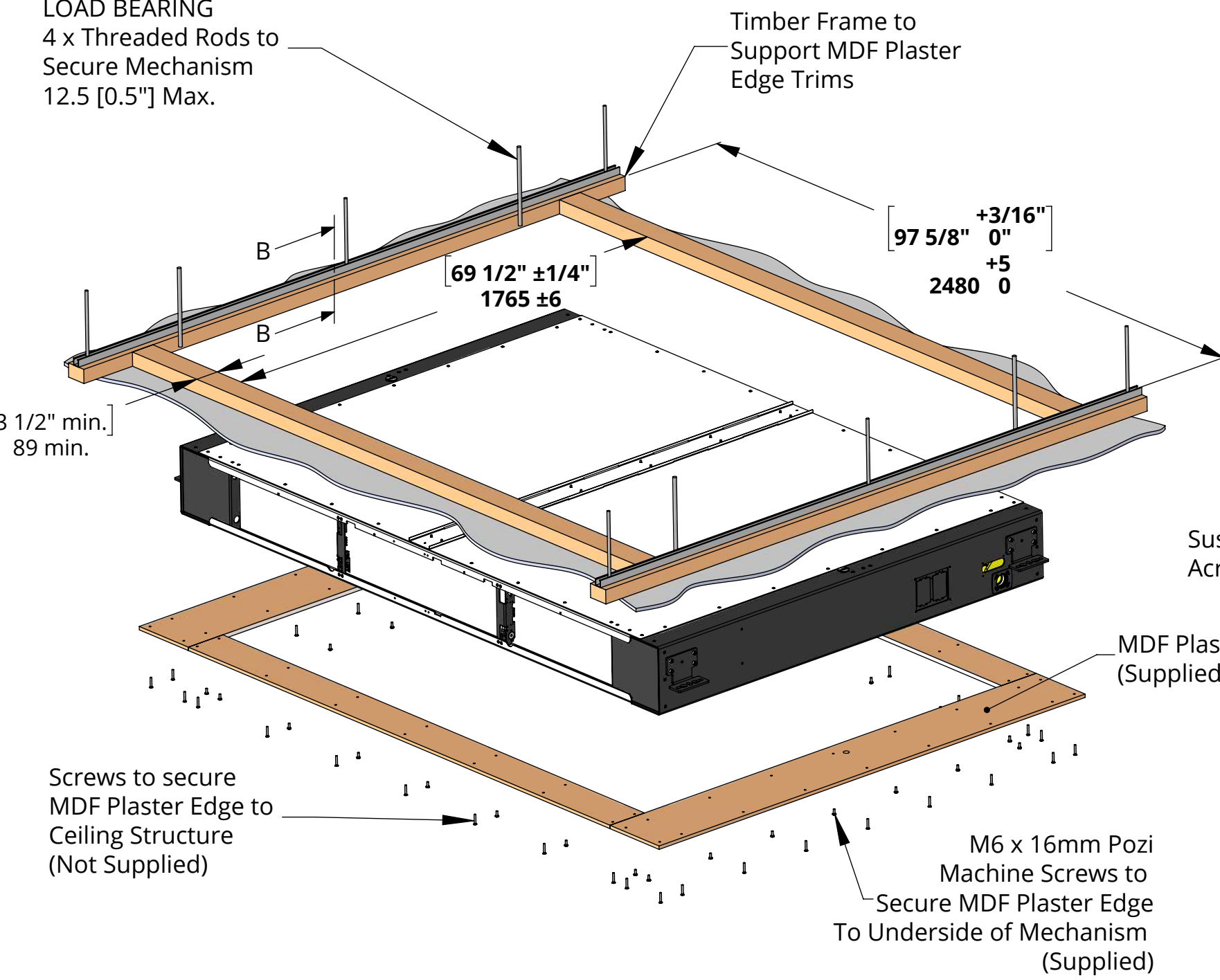
WITH SWIVEL AND TELESCOPE

OPTION 2 - FIXING INTO SUSPENDED CEILING



LOAD BEARING
4 x Threaded Rods to
Secure Mechanism
12.5 [0.5"] Max.

Timber Frame to
Support MDF Plaster
Edge Trims



CHRST8-RES

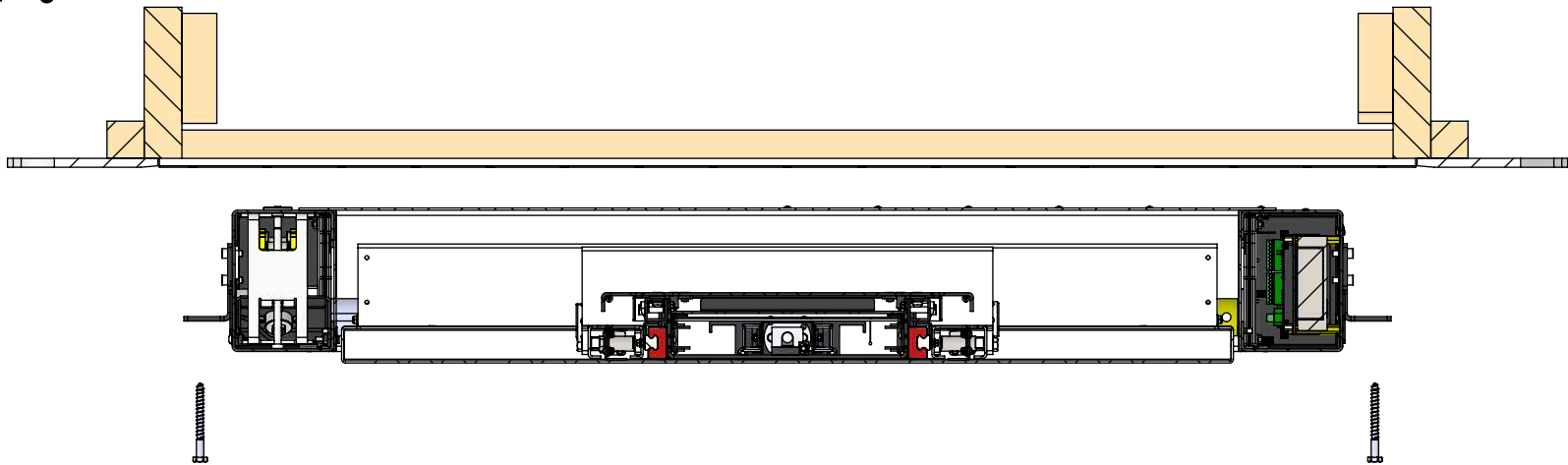
RESIDENTIAL CEILING HINGE RANGE

WITH SWIVEL AND TELESCOPE

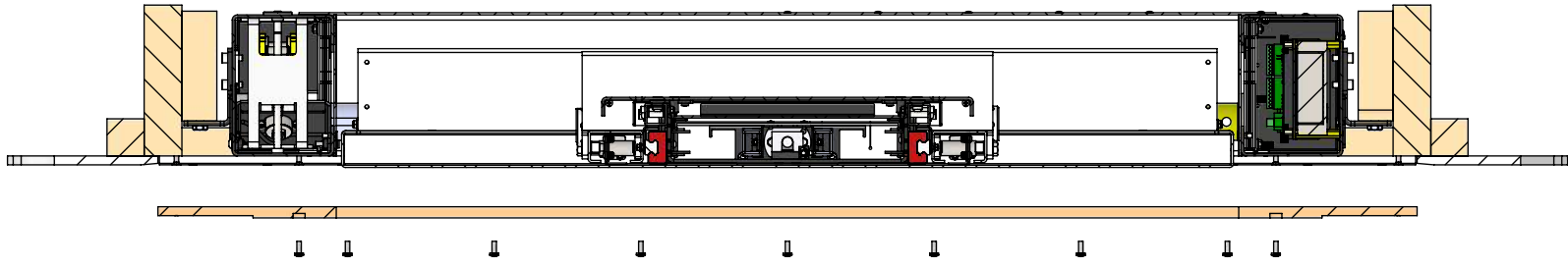
INSTALLATION PRECEDURE

THE INSTALLATION PROCEDURE IS CARRIED OUT
IN THE SAME WAY FOR OPTION 1 OR OPTION 2

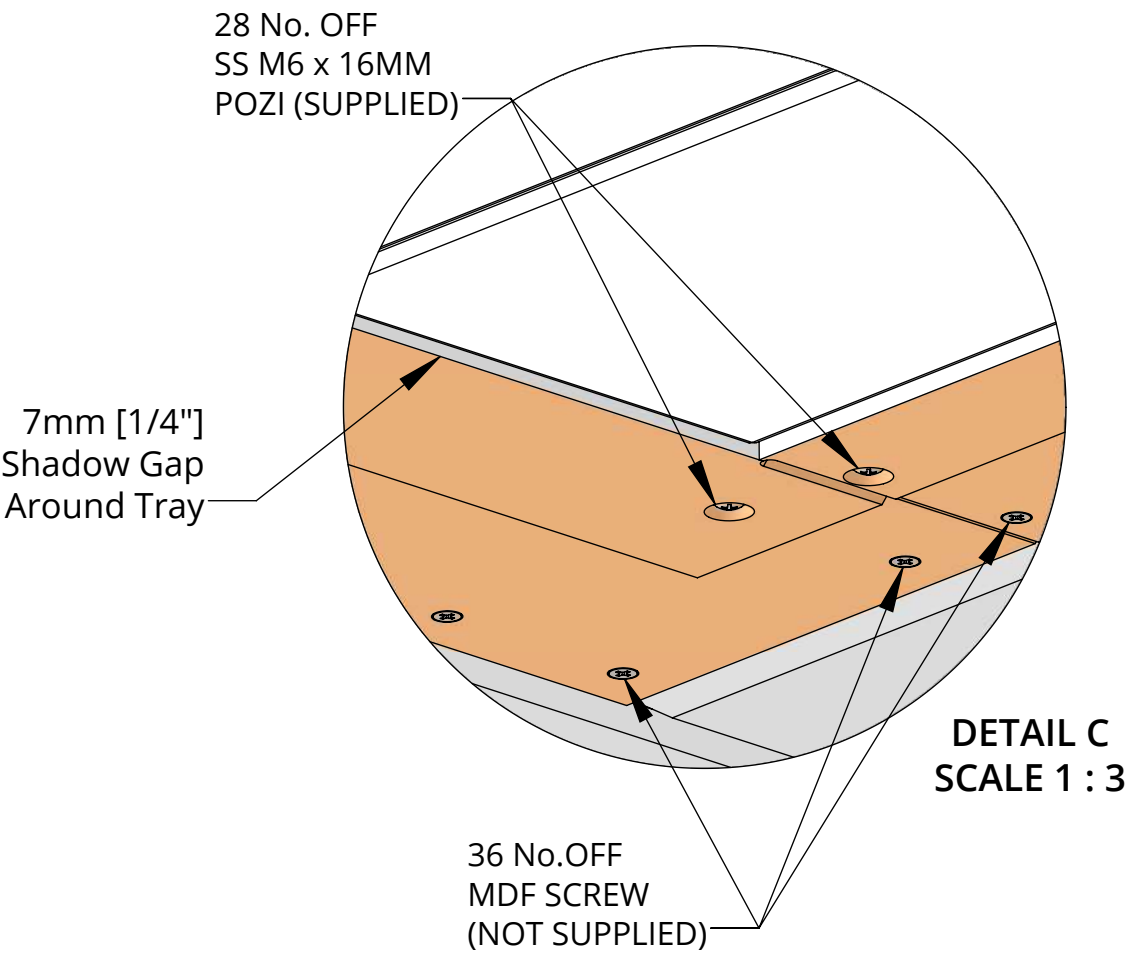
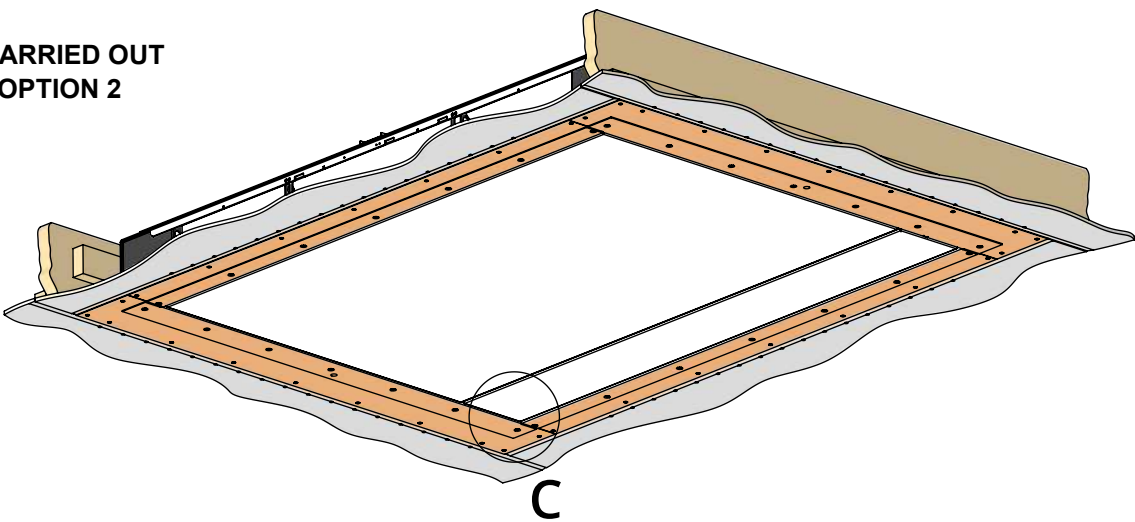
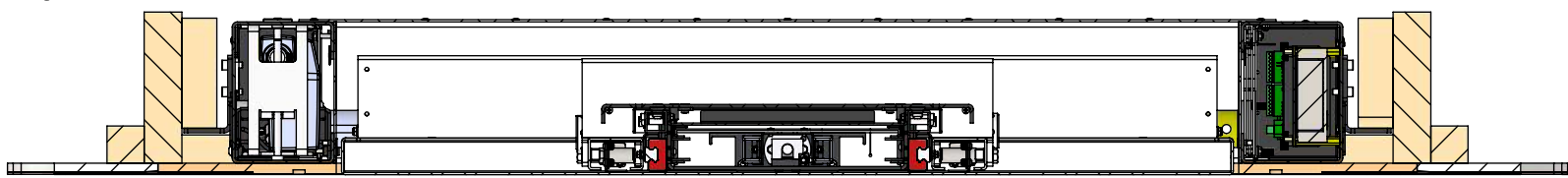
1. MECHANISM INSTALLATION



2. MDF PLASTER TRIM INSTALLATION



3. PLASTERING

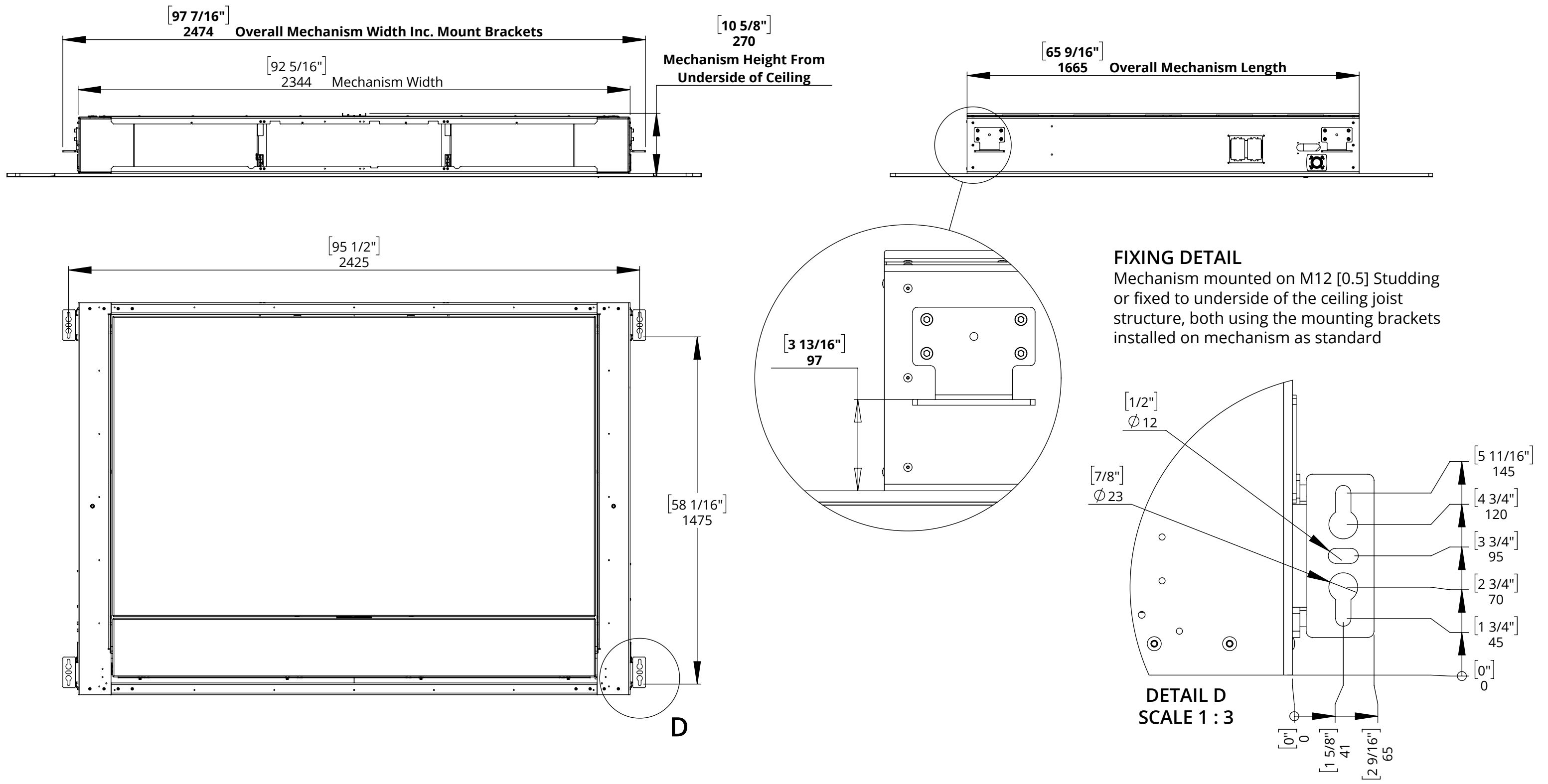


CHRST8-RES

RESIDENTIAL CEILING HINGE RANGE

WITH SWIVEL AND TELESCOPE

MECHANISM DIMENSIONS - CLOSED

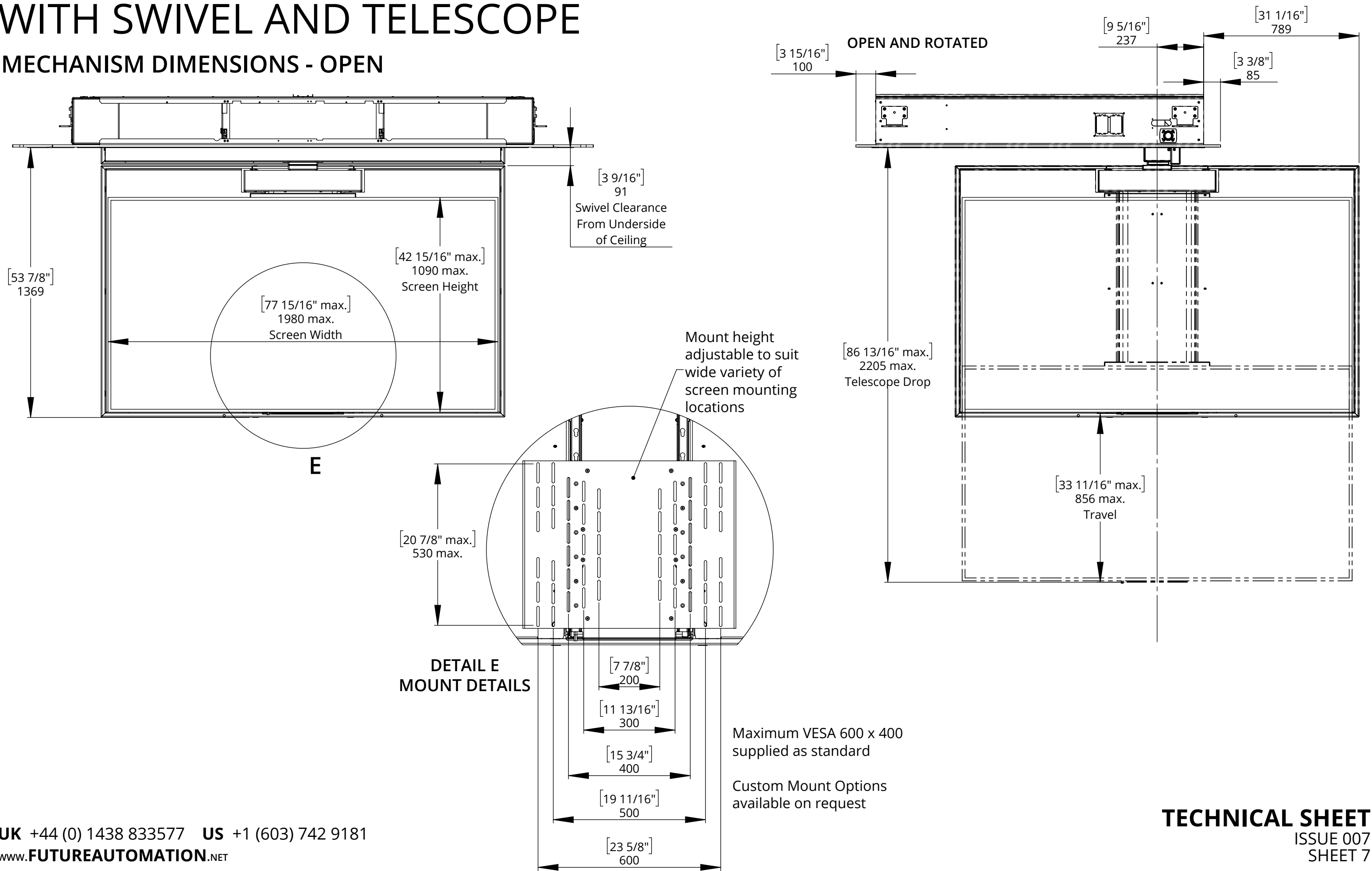


CHRST8-RES

RESIDENTIAL CEILING HINGE RANGE

WITH SWIVEL AND TELESCOPE

MECHANISM DIMENSIONS - OPEN

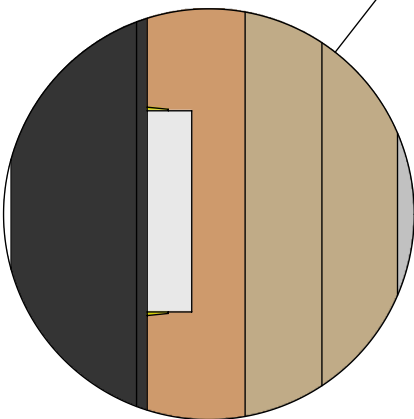
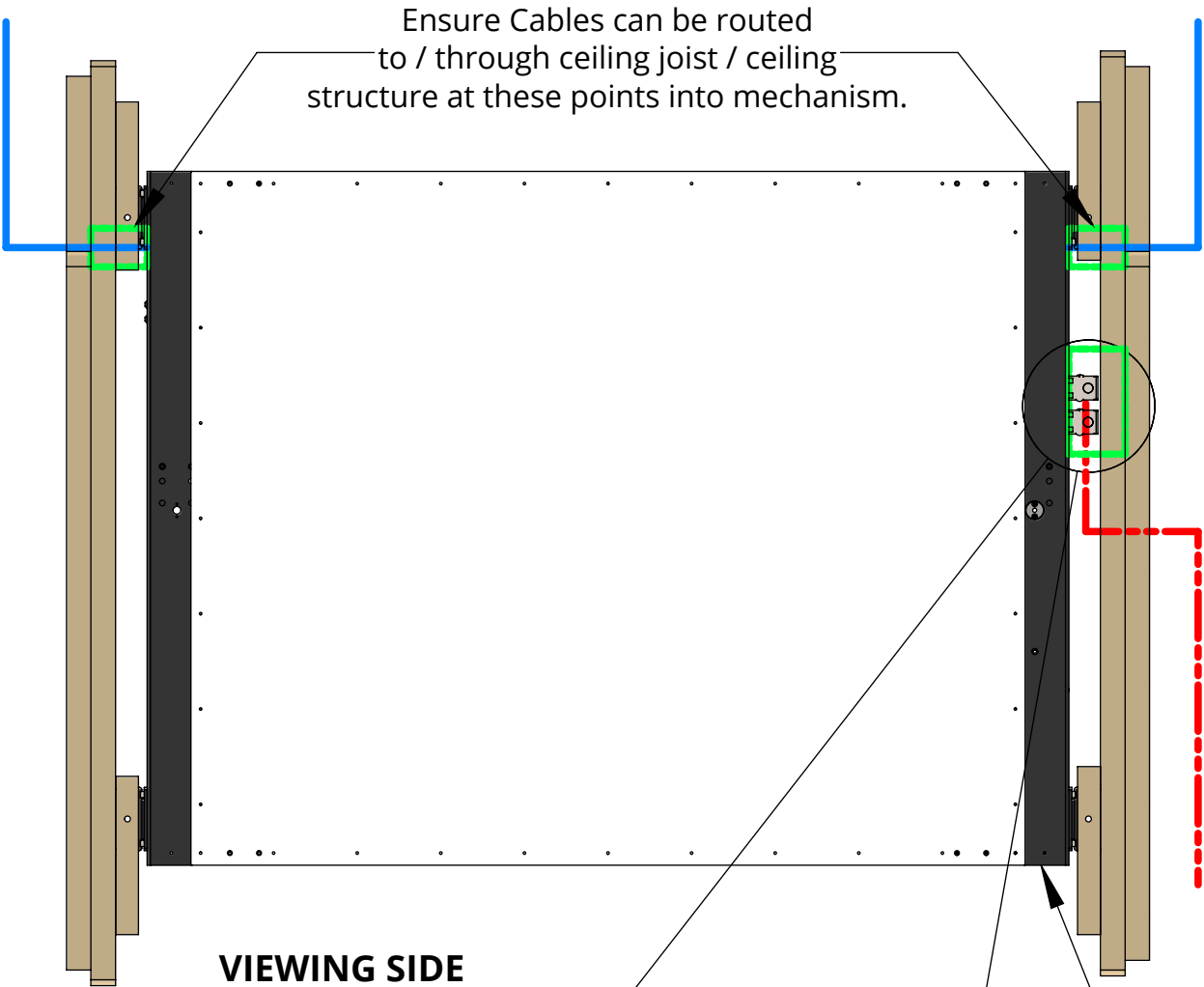


CHRST8-RES

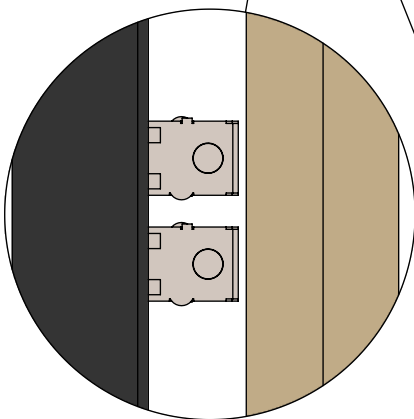
RESIDENTIAL CEILING HINGE RANGE

WITH SWIVEL AND TELESCOPE

CEILING PREPARATION



UK 2G Mains
Plasterboard
Back Box



2 No.
US J-Box

Cable Routing

Cables for the screen can be routed in from both sides, allowing for power and signal cables to be separated when entering the mechanism.

The opening on both sides is MIN. 32mm [1.3"] in diameter allowing for multiple cables to be routed to the screen.

A power outlet mounting plate is supplied in the right hand gearbox allowing for UK and US power outlets to be wired directly into the mechanism.

Mechanism control system housed internally on this side. Accessible from removable internal access hatch.

— AV Signal Cables / Mechanism Control Cables
- - - Power Cable for Mechanism and AV

