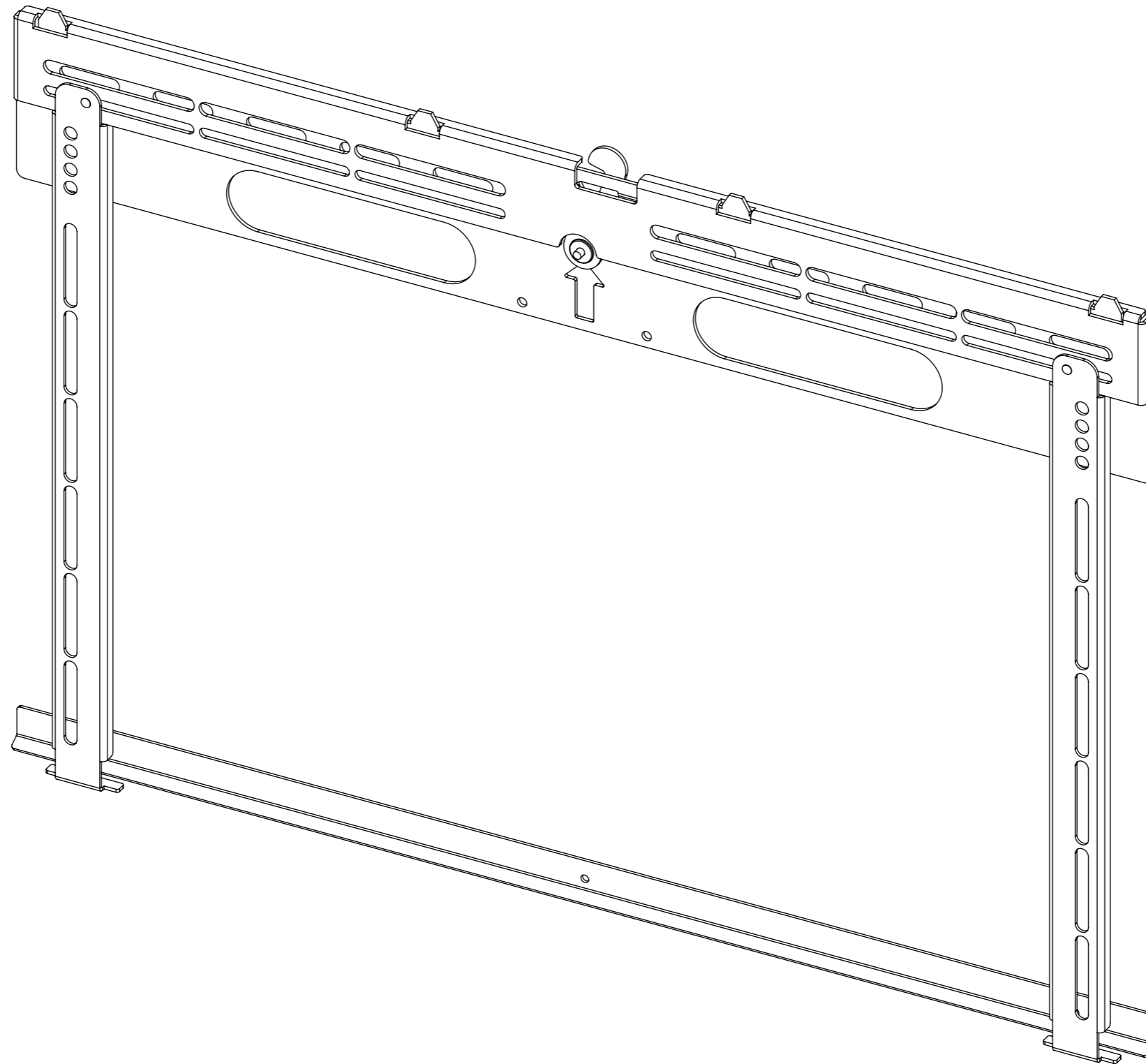


# V74-MO

## MARINE OUTDOOR FIXED WALL MOUNT



future automation



# V74-MO

## MARINE OUTDOOR FIXED WALL MOUNT

SPECIFICATION	MEASUREMENTS
Product Dimensions WxHxD	730mm (28.7") x 154mm (20.2") x 12.5mm (0.5")
Bolt Pattern (VESA)	Up to 700x400
Product Weight	2.9Kg (6.4lb)
Packaging Dimensions	750mm (29.5") x 140mm (5.5") x 40mm (1.5")
Shipping Weight	3Kg (7lb)
Screen Sizes (approx)	40" - 75"
Package Contents	Mechanism
Marine Suitable	Yes (Indoor)

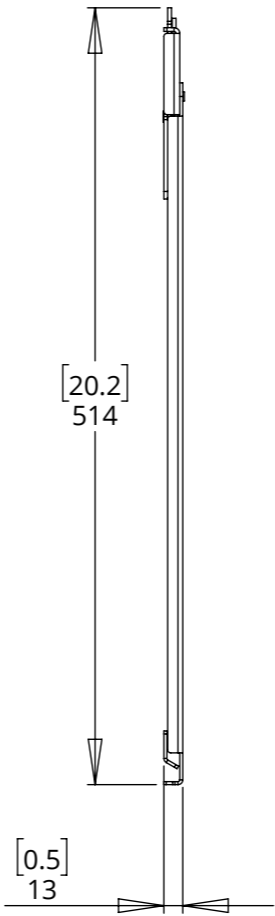
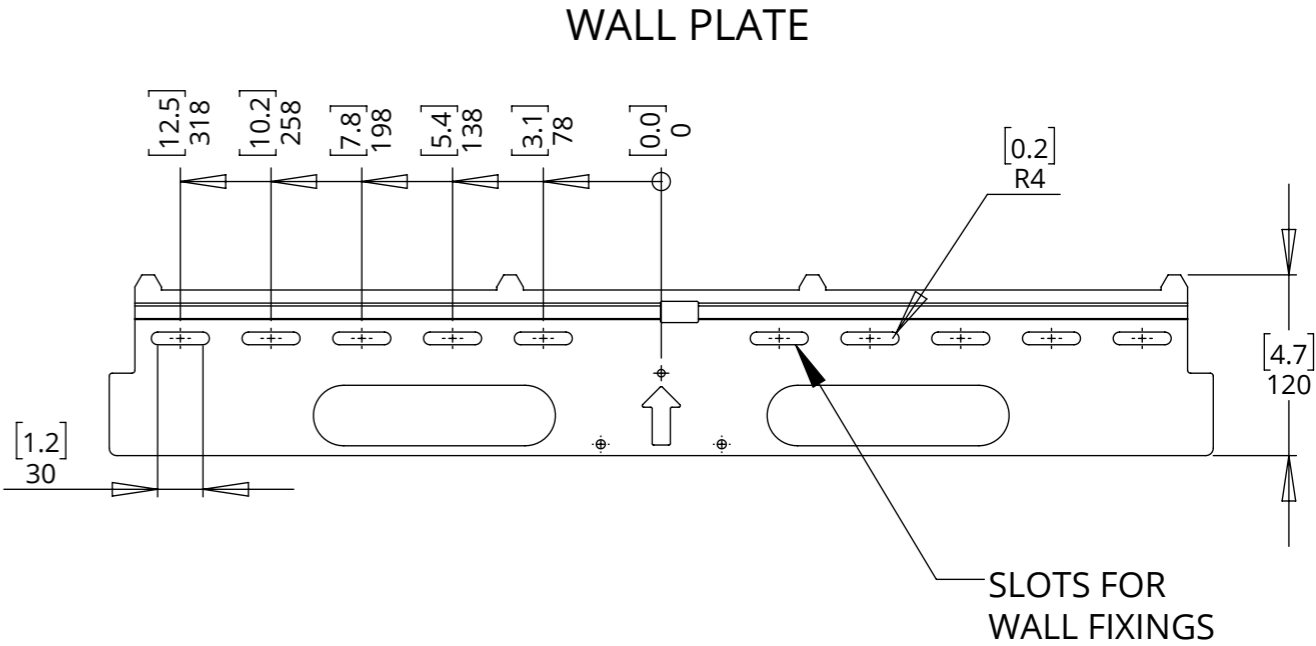
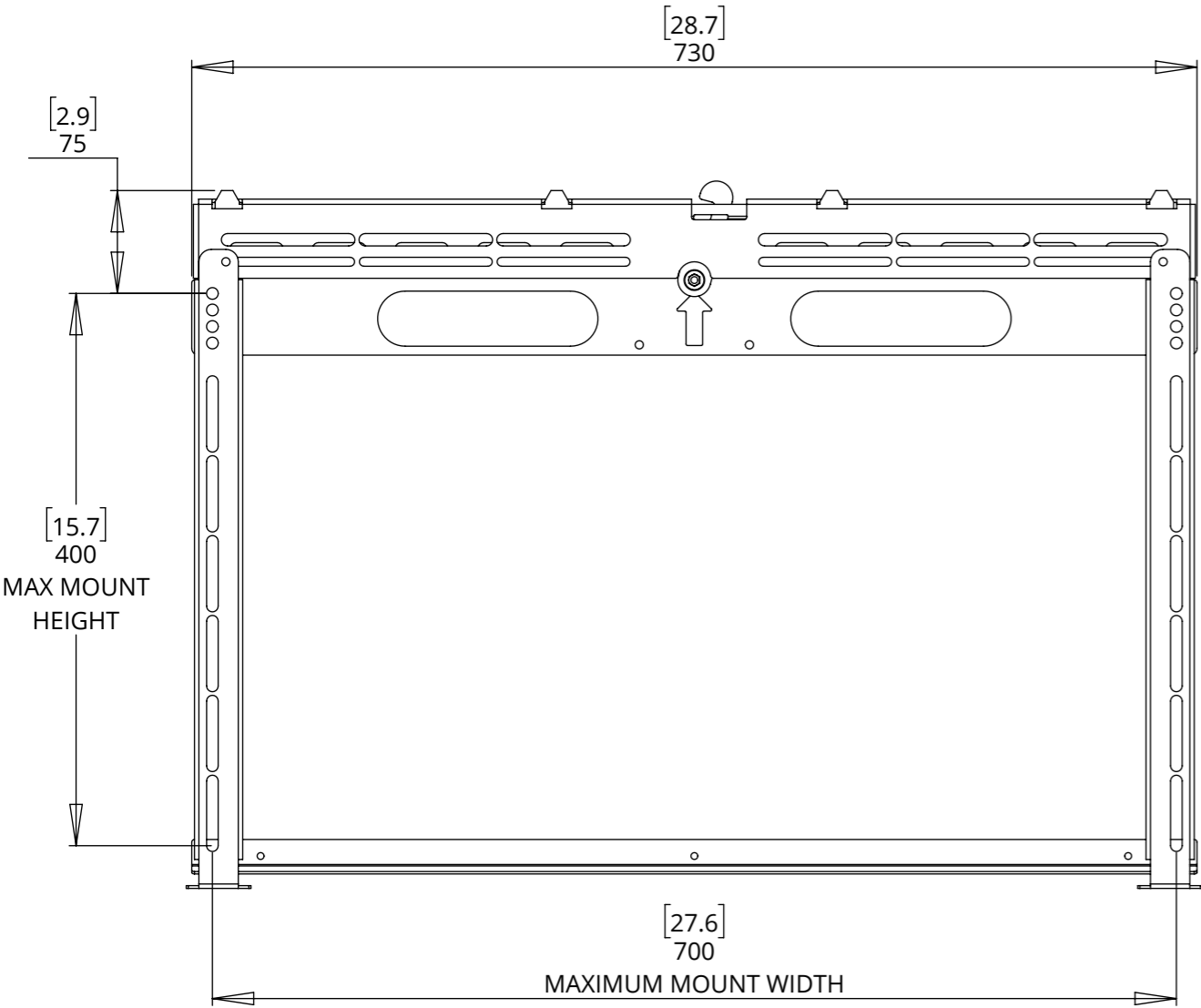
# V74-MO

## MARINE OUTDOOR FIXED WALL MOUNT

### DIMENSIONS

This bracket supports all VESA formats up to VESA 700x400.

Maximum bolt pattern dimensions achievable with the V74 are 700mm wide x 400mm high.



# V74-MO

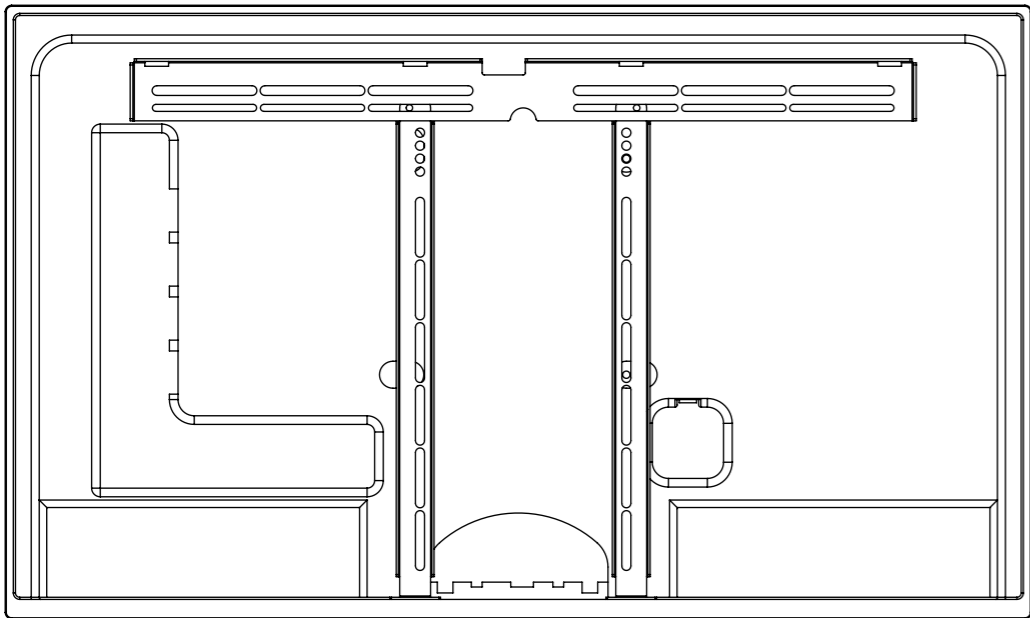
## MARINE OUTDOOR FIXED WALL MOUNT



future automation

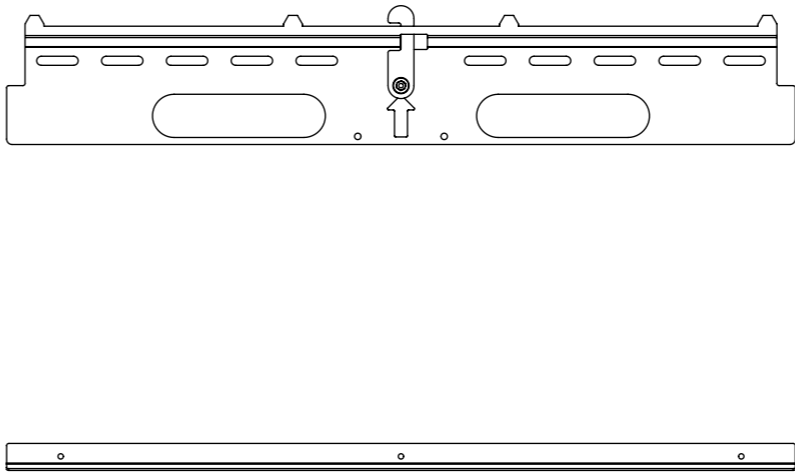
### SIMPLE WALL MOUNTING

STEP 1



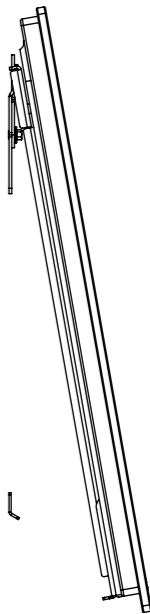
FIX UPRIGHTS TO THE BACK OF THE  
SCREEN AND ADD ON THE TOP BAR

STEP 2



FIX WALL PLATE, AND BOTTOM  
BAR, TO WALL WITH SUITABLE  
FIXING

STEP 3



HOOK THE TOP BEAM INTO  
THE WALL PLATE AND SLIDE  
OVER LOCK TAB TO SECURE

# V74-MO

## MARINE OUTDOOR FIXED WALL MOUNT



future automation

### RECESS MOUNTING

Any recess should incorporate a minimum 15mm border around the screen so that it can be hooked onto the wall plate.

The screen will drop down 10mm when hooked onto the wall plate.

In order to have the screen face flush with the wall the recess will need a depth of 12.5mm plus the depth of the screen.

